

STERLING
ELECTRIC, INC.

STOCK ELECTRICAL PRODUCTS

SPECIFICATIONS AND PRICING
— June 2016 —



STANDARD STEEL FRAME AND CAST IRON MOTORS

Our standard Rolled Steel and Cast Iron Frame motors provide superior quality and unique design features compared to competing brands in the marketplace. We provide a full product offering in Cast Iron construction from 254T through 444T Frame designs to meet the harsh application requirements found in today's industry.

Our standard product provides the following outstanding features:

- 3 Phase, 60 Hz., 230/460 Volt or 575 Volt
- CE, CSA and CSE Approved
- Stainless Steel Nameplate
- Cast Iron End Brackets on Rolled Steel or Cast Iron Frames
- Diagonally Split Conduit Box
- Inverter Rated per NEMA MG1-Part 31.4.4.2



STERLI-SEAL® SMOOTH BODY WASHDOWN STEEL FRAME MOTORS

Our Sterli-Seal Washdown products are designed to withstand the challenges of today's Process Industry where high-pressure washing is required for sanitary requirements.

This product provides a Smooth Rolled Steel Constructed Frame to eliminate buildup of material and to allow ease in cleanup in a sanitary application.

Sterli-Seal Smooth Body Washdown Motors offer the following outstanding features:

- 3 Phase, 60 Hz., 208-230/460 Volt or 575 Volt
- CE, CSA and CSE Approved
- Stainless Steel Etched Nameplate
- 50 Hz. Ratings available - refer to factory for details
- Class F Insulation with a 1.15 Service Factor
- Inverter Rated per NEMA MG1-Part 31.4.4.2
- Cast Iron End Brackets with drain holes in four quadrants
- Smooth Body Steel Frame
- Diagonally Split and Gasketed Stamped Steel Conduit Box Rotatable in 90 degree increments
- Pre-lubricated (Sealed) oversized bearings
- Internally locked drive end bearing
- Lip seals on drive end and opposite drive end brackets
- Base mounted units designed with six mounting holes to provide flexibility for mounting of NEMA 56, 140, 180 and 210 frame sizes



STERLI-SEAL® ALL STAINLESS STEEL INVERTER RATED MOTORS

Our Steri-Seal® Stainless Steel motors are designed to provide superior performance in sanitary applications.

Our STANDARD product provides the following outstanding features:

- 3 Phase, 60 Hz., 208-230/460 Volt or 575 Volt
- CE, CSA and CSE Approved
- Etched Nameplate
- 50 Hz. Ratings available - refer to factory for details
- Class F Insulation with a 1.15 Service Factor
- Inverter Rated per NEMA MG1-Part 31.4.4.2
- Cast 304 Stainless Steel End Brackets with drain holes in four quadrants
- 304 Stainless Steel Frame
- Diagonally Split and Gasketed 304 Stainless Steel Conduit Box Rotatable in 90 degree increments
- Pre-lubricated (Sealed) oversized bearings
- Internally locked drive end bearing
- Lip seals on drive end and opposite drive end brackets
- Base mounted units designed with six mounting holes to provide flexibility for mounting of NEMA 56, 140, 180 and 210 frame sizes



Sterling Electric produces a full range of electric motors to meet the most demanding applications found in today's industry. From standard duty applications to the harsh environments of the chemical industry or the washdown requirements of the food processing industry, Sterling Electric has the solution.

This New Stock Product Catalog provides a full selection of motors that meet the EISA 2007 (Energy Independence & Security Act) requirements that go into effect with motors produced after June 1, 2016. Off-the-shelf motors produced prior to this date can be sold until inventories are depleted.

EISA 2007 requires that all motors previously covered under the original Energy Policy Act of 1992 (EPAAct) must meet the NEMA Premium Efficient efficiencies as defined by NEMA MG1, Table 12-12. EISA also expands the mandated energy efficiency standards to cover motor designs that were originally exempt from regulation. Motors that were exempt and are now included in EISA 2007 would be:

- Two Digit Frame 56/56H/56C 1HP and Larger
- NEMA Design "C" High Starting Torque Motors
- 8-Pole (900) Rpm Motors
- JM and JP Close-coupled pump motors
- Footless motors
- Vertical solid shaft normal thrust motor (as tested in a horizontal configuration)
- A poly-phase motor with voltage of not more than 600 volts (other than 230 or 460 volts (or 575V for Canada)
- Fire pump motors 1-200HP

All of the referenced motors must comply with Energy Efficient efficiencies as defined by NEMA MG1, Table 12-11.

Motors that are not covered by EISA would be:

- Adjustable speed inverter duty motors with optimized windings for use on Variable Frequency Drives per NEMA MG1-Part 31 with no line start
- Intermittent duty
- Submersible motors
- DC motors

For further information regarding EISA, please refer to Title 10 of the Code of Federal Regulations Part 431 (10 CFR Part 431) which is available at www.gpoaccess.gov

All of the new requirements, pertaining to energy regulations, will improve our dependence on oil and other natural resources and allow us energy savings in the future. As we move forward, additional changes will occur with motors that will be required to meet EPAAct regulations or are exempt from EISA 2007 as outline above.

Sterling Electric will continue to improve our products to meet or exceed the energy laws and insure our customers the highest quality and energy cost savings in the years ahead.

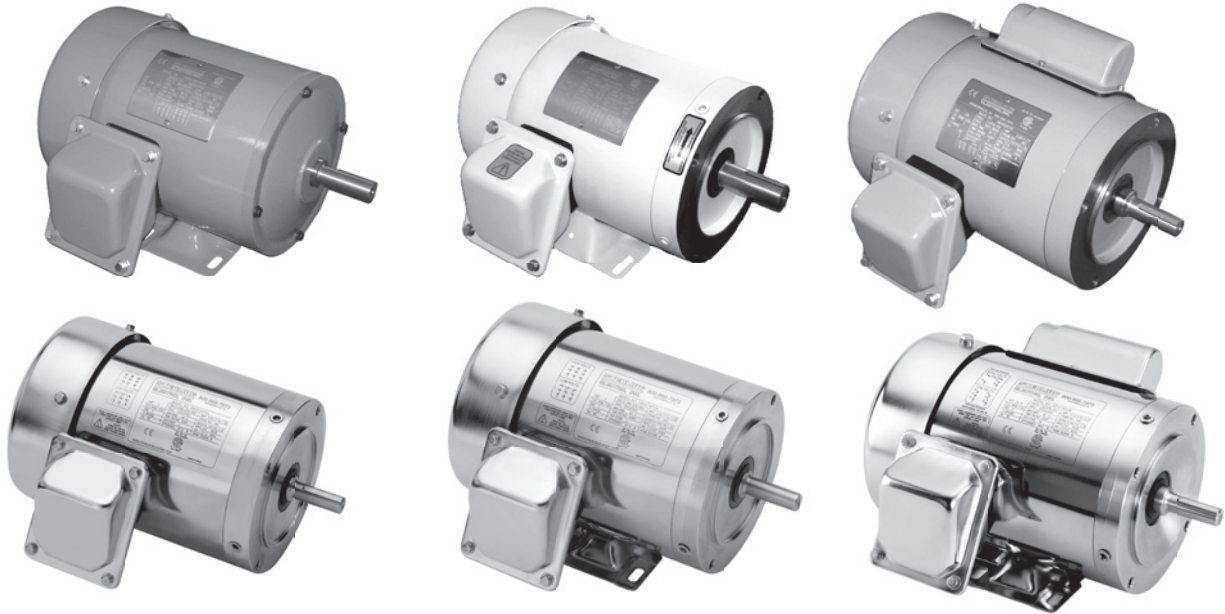
Table of Contents

	Page
Product Specifications	2 - 3
<u>Foot Mounted Motors</u>	
Totally Enclosed Fan Cooled	4 - 5
<u>C-Face Foot Mounted Motors</u>	
<u>Three Phase</u>	
Totally Enclosed Fan Cooled	6
Sterli-Seal® Washdown Duty	11
Encapsulated Sterli-Seal® Washdown	13
Sterli-Seal® Stainless Steel Washdown	15
Encapsulated Sterli-Seal® Stainless Washdown	20
<u>Single Phase</u>	
Totally Enclosed Fan Cooled	
Sterli-Seal® Washdown Duty	
Sterli-Seal® Stainless Steel Washdown	17
<u>C-Face Footless Motors</u>	
<u>Three Phase</u>	
Totally Enclosed Fan Cooled	7
Sterli-Seal® Washdown Duty	12
Encapsulated Sterli-Seal® Washdown	14
Sterli-Seal® Stainless Steel Washdown	16
Encapsulated Sterli-Seal® Stainless Washdown	21
Brakemotors	8 -10
<u>Close Coupled Pump Mount</u>	
Sterli-Seal® Stainless Steel Washdown	18
Encapsulated Sterli-Seal® Stainless Washdown	22
<u>Inverter Duty Motors</u>	
Sterli-Seal® Washdown Duty	12
Sterli-Seal® Stainless Steel Washdown	19
Encapsulated Sterli-Seal® Stainless Washdown	23
Engineering Data Index	24

Complete Product Specifications with Data Sheet, 3D (Step File), AutoCad or PDF File can be obtained from www.sterlingelectric.com

Our Website, also includes the capability to select product online to obtain a model number that meets your requirements.

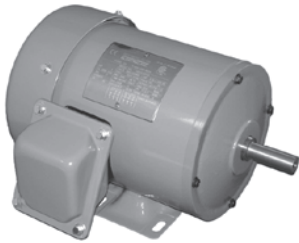
FRACTIONAL HORSEPOWER - FRAME 56



Certifications:	All	CE, CSA, NRTL/C
Insulation:	All	- Class F (Inverter Rated per NEMA MG1 Part 31.4.4.2)
Service Factor:	All	- 1.15
Main Frame:	Rolled Steel Style Cast Fe Max Style Sterli-Seal® Stainless Style Sterli-Seal® Smooth Body Style	- Rolled Steel (smooth body) - Cast Iron (smooth body) - 304 Stainless steel (smooth body) - Rolled Steel (smooth body)
End Brackets:	Rolled Steel Style Cast Fe Max Style Sterli-Seal® Stainless Style Sterli-Seal® Smooth Body Style	- Cast Iron - Cast iron - 304 Stainless steel (smooth body) - Cast Iron (smooth body)
Conduit Box:	Rolled Steel Style Cast Fe Max Style Sterli-Seal® Stainless Style Sterli-Seal® Smooth Body Style	- Stamped Steel - Cast iron - 304 Stainless steel (smooth body) - Stamped Steel
Fan Guard:	Rolled Steel Style Cast Fe Max Style Sterli-Seal® Stainless Style Sterli-Seal® Smooth Body Style	- Stamped steel - Stamped steel - 304 Stainless steel - Stamped Steel
Shaft:	Rolled Steel & Cast Fe Max Style Sterli-Seal® Stainless Style Sterli-Seal® Smooth Body Style	- Keyed carbon steel - 304 Keyed stainless steel - 304 Keyed stainless steel
Bearings:	All Styles	- Prelubricated ball bearings
Connections:	All Styles	- 9 leads, suitable for across-the-line starting Method

INTEGRAL HORSEPOWER - FRAME 143T THRU 445T

Certificatons:	All Styles	CE, CSA, CSE, NRTL/C UL Recognized
Insulation:	TEFC Style (Cast Iron) Steel Frame Smooth Body	- Class F - Class F (inverter Rated per NEMA MG1 Part 31.4.4.2
Service Factor:	All Styles	- 1.15
Main Frame:	TEFC Style Sterli-Seal® (Washdown) Sterli-Seal® Stainless Style	- Steel Frame (smooth body) 56-215T Frame Cast Iron (Ribbed Body) 254T & Larger - Steel Frame (smooth body) 56-215T Frame Cast Iron (Ribbed Body) 254T & Larger - 304 Stainless steel (smooth body)
End Brackets:	TEFC Style Sterli-Seal® (Washdown) Sterli-Seal® Stainless Style	- Cast iron - Cast iron with double lip seals on stock motors - Modified motors supplied with v-ring slinger - 304 Stainless steel
Conduit Box:	TEFC Style Sterli-Seal® (Washdown) Sterli-Seal® Stainless Style	- Stamped steel as standard. Cast Iron on Frame 254T and Larger - Stamped Steel (Smooth Body) - Cast Iron (Ribbed body) 254T Frame & Larger - 304 Stainless steel
Fan Guard:	TEFC Style Sterli-Seal® (Washdown) Sterli-Seal® Stainless Style	- Stamped steel as standard. - Stamped Steel (Smooth Body) and Cast Iron (Ribbed Body) - 304 Stainless steel
Shaft:	TEFC Style Sterli-Seal® (Washdown) Sterli-Seal® Stainless Style	- Keyed carbon steel - Keyed (one piece) 416 stainless steel on 3600 Rpm stock motors or 304 on 1800 Rpm and slower. - Modified motors supplied with carbon steel - 304 Stainless steel
Bearings:	TEFC Style Sterli-Seal® (Washdown) Style Sterli-Seal® Stainless Style	- Frames 56 through 286T - 3600, 1800, 1200 and 900 RPM motors have oversized prelubricated ball bearings - Frames 324T and larger have oversized regreasable ball bearings with alemite grease fittings, as standard - Oversized sealed ball bearings - Oversized sealed ball bearings
Connections:	All Styles	- All Steel Frames are 9 leads suitable for Across-the-line starting. - Frames 254T and larger Cast Iron have 12 leads, suitable for across-the-line, Y-Delta and part winding starting methods. Reference connection diagrams - pages 27 & 28



FOOT MOUNTED
3 Phase, 60 Hz, 230/460 Volt
Totally Enclosed Fan Cooled Enclosure

HP	RPM	Frame	F/L Amps	Nominal Efficiency	Model Number	List Price
.33	1800	56	1.36/.68	70.0 %	NBY034FFA ◊	\$ 376
	3600	56	1.50/.75	73.0 %	NBY052FFA ◊	\$ 328
.50	1800	56	1.70/.85	80.0 %	NBY054FFA ◊	\$ 400
	3600	56	2.20/1.10	74.0 %	NBY072FFA ◊	\$ 360
.75	1800	56	2.20/1.10	81.5 %	NBY074FFA ◊	\$ 426
	3600	56	3.10/1.55	71.0 %	NB0012FFA ±	\$ 416
1.0	3600	56	3.00/1.50	77.0 %	NH0012FFA	\$ 483
	1800	56	3.30/1.65	79.0 %	NB0014FFA ±	\$ 434
	1800	56	3.00/1.50	85.5 %	NH0014FFA	\$ 503
	1800	143T	3.00/1.50	85.5 %	DH0014FFA	\$ 524
	1200	145T	3.40/1.70	80.4 %	DH0016FFA	\$ 532
	3600	56	4.30/2.15	74.0 %	NBY152FFA ±	\$ 484
1.5	3600	56	3.80/1.90	84.0 %	NHY152FFA	\$ 484
	3600	143T	3.80/1.90	84.0 %	DHY152FFA	\$ 520
	1800	56	4.50/2.25	80.5 %	NBY154FFA ±	\$ 478
	1800	56	4.20/2.10	86.5 %	NHY154FFA	\$ 531
	1800	145T	4.20/2.10	86.5 %	DHY154FFA	\$ 536
	1200	182T	5.00/2.50	87.5 %	DHY156FFA	\$ 652
2.0	3600	56	5.80/2.90	78.0 %	NB0022FFA ±	\$ 534
	3600	56	5.00/2.50	85.5 %	NH0022FFA	\$ 568
	3600	145T	5.00/2.50	85.5 %	DH0022FFA	\$ 568
	1800	56	6.00/3.00	82.0 %	NB0024FFA ±	\$ 542
	1800	56	5.20/2.60	86.5 %	NH0024FFA	\$ 565
	1800	145T	5.20/2.60	86.5 %	DH0024FFA	\$ 565
	1200	184T	6.20/3.10	88.5 %	DH0026FFA	\$ 684
3.0	3600	182T	7.40/3.70	86.5 %	DH0032FFA	\$ 630
	1800	182T	7.80/3.90	89.5 %	DH0034FFA	\$ 664
	1200	213T	9.20/4.60	88.5 %	DH0036FFA	\$ 904
5.0	3600	184T	11.6/5.80	88.5 %	DH0052FFA	\$ 700
	1800	184T	13.2/6.60	89.5 %	DH0054FFA	\$ 765
	1200	215T	14.8/7.40	89.5 %	DH0056FFA	\$1280
7.5	3600	213T	17.2/8.60	89.5 %	DHY752FFA	\$1048
	1800	213T	18.0/9.00	91.7 %	DHY754FFA	\$ 975
	1200	254T	20.2/10.1	91.7 %	EHY756FFA	\$1996
10	3600	215T	22.4/11.2	90.2 %	DH0102FFA	\$1064
	1800	215T	24.4/12.2	91.7 %	DH0104FFA	\$1188
	1200	256T	26.4/13.2	91.7 %	EH0106FFA	\$2428
15	3600	254T	34.8/17.4	91.0 %	TH0152FFA	\$2072
	1800	254T	35.8/17.9	93.0 %	TH0154FFA	\$2000
	1200	284T	38.8/19.4	92.4 %	EH0156FFA	\$3304

◊ Not Applicable to EISA Premium Efficient Requirements

± Obsolete After Inventory is Depleted



FOOT MOUNTED
3 Phase, 60 Hz, 230/460 Volt
Totally Enclosed Fan Cooled Enclosure

HP	RPM	Frame	F/L Amps	Nominal Eff.	Model Number	List Price
20	3600	256T	46.4/23.2	91.0 %	TH0202FFA	\$ 2656
	1800	256T	47.4/23.7	93.0 %	TH0204FFA	\$ 2526
	1200	286T	51.0/25.5	92.4 %	EH0206FFA	\$ 4260
25	3600	284TS	56.8/28.4	91.7 %	TH0252FFA	\$ 3286
	1800	284T	47.4/23.7	93.6 %	TH0254FFA	\$ 3080
	1200	324T	60.4/30.2	93.0 %	EH0256FFA	\$ 5186
30	3600	286TS	68.2/34.1	91.7 %	TH0302FFA	\$ 3984
	1800	286T	69.0/35.0	94.1 %	TH0304FFA	\$ 3720
	1200	326T	72.0/36.0	93.0 %	EH0306FFA	\$ 5888
40	3600	324TS	90.2/45.1	92.4 %	TH0402FFA	\$ 5282
	1800	324T	90.6/45.3	94.1 %	TH0404FFA	\$ 4950
	1200	364T	96.0/48.0	94.5 %	EH0406FFA	\$ 8444
50	3600	326TS	112.0/56.0	93.0 %	TH0502FFA	\$ 7072
	1800	326TC	112.6/56.3	94.5 %	TH0504FFA	\$ 6372
	1200	365TC	120.0/60.0	94.5 %	EH0506FFA	\$ 9758
60	3600	364TS	133.4/66.7	93.6 %	TH0602FFA	\$ 8852
	1800	364T	136.0/68.0	95.0 %	TH0604FFA	\$ 8708
75	3600	365TS	166.8/83.4	93.6 %	TH0752FFA	\$11272
	1800	365T	169.4/84.7	95.4 %	TH0754FFA	\$10392
100	3600	405TS	228/114	94.5 %	EH1002FFA	\$16500
	1800	405TS	226/113	95.4 %	TH1004FFA	\$12876
125	3600	444TS	145 *	94.5 %	EH1252FFB *	\$19262
	1800	444T	140 *	95.4 %	TH1254FFB *	\$17636

Cast Iron Construction

* 460 Volt Only



C-FACE FOOT MOUNTED
3 Phase, 60 Hz, 208-230/460 Volts
Totally Enclosed Fan Cooled Enclosure

HP	RPM	Frame	F/L Amps	Nominal Eff.	Model Number	List Price
.50	1800	56C	1.80/0.90	74.0%	NBY054NHA ◊	\$ 428
	1800	56C	1.80/0.90	74.0%	RBY054FHA ◊	\$ 482
.75	1800	56C	2.60/1.30	74.5%	NBY074FHA ◊	\$ 454
	1800	56C	2.60/1.30	74.5%	RBY074FHA ◊	\$ 524
1.0	3600	56C	3.10/1.55	71.0 %	NB0012FHA ±	\$ 464
	3600	56C	3.00/1.50	77.0 %	NH0012FHA	\$ 515
	1800	56C	3.20/1.60	77.5%	NB0014FHA ±	\$ 484
	1800	56C	3.00/1.50	85.5 %	NH0014FHA	\$ 552
	1800	56C	3.20/1.60	77.5%	RB0014FHA ±	\$ 570
	1800	143TC	3.00/1.50	85.5 %	DH0014FHA	\$ 621
1.5	3600	56C	4.30/2.15	74.0 %	NBY152FHA ±	\$ 494
	3600	56C	3.80/1.90	84.0 %	NHY152FHA	\$ 568
	3600	145TC	3.80/1.90	84.0 %	DHY152FHA	\$ 651
	1800	56C	4.30/2.15	83.5%	NBY154FHA ±	\$ 514
	1800	56C	4.20/2.10	86.5 %	NHY154FHA	\$ 592
	1800	145TC	4.20/2.10	86.5 %	DHY154FHA	\$ 639
2.0	3600	56C	5.80/2.90	78.0 %	NB0022FHA ±	\$ 576
	3600	56C	5.00/2.50	85.5 %	NH0022FHA	\$ 662
	1800	56C	5.00/2.50	85.5 %	NB0024FHA ±	\$ 610
	3600	145TC	5.00/2.50	85.5 %	DH0022FHA	\$ 718
	1800	56C	5.20/2.60	86.5 %	NH0024FHA	\$ 683
	1800	145TC	5.20/2.60	86.5 %	DH0024FHA	\$ 702
3.0	3600	182TC	7.40/3.70	86.5 %	DH0032FHA	\$ 899
	1800	182TC	7.80/3.90	89.5 %	DH0034FHA	\$ 805
5.0	3600	184TC	11.6/5.80	88.5 %	DH0052FHA	\$1024
	1800	184TC	13.2/6.60	89.5 %	DH0054FHA	\$ 915
7.5	3600	213TC	17.2/8.60	89.5 %	DHY752FHA	\$1318
	1800	213TC	18.0/9.00	91.7 %	DHY754FHA	\$1171
10	3600	215TC	22.4/11.2	90.2 %	DH0102FHA	\$1555
	1800	215TC	24.4/12.2	91.7 %	DH0104FHA	\$1403
15	3600	254TC	34.8/17.4	91.0 %	TH0152FHA	\$2420
	1800	254TC	35.8/17.9	93.0 %	TH0154FHA	\$2440
20	3600	256TC	46.4/23.2	91.0 %	TH0202FHA	\$3048
	1800	256TC	47.4/23.7	93.0 %	TH0204FHA	\$2912
25	3600	284TSC	56.8/28.4	91.7 %	TH0252FHA	\$3624
	1800	284TC	57.6/28.8	93.6 %	TH0254FHA	\$3452
30	3600	286TSC	68.2/34.1	91.7 %	TH0302FHA	\$4248
	1800	286TC	69.0/34.5	94.1 %	TH0304FHA	\$3994
40	3600	324TSC	90.2/45.1	92.4 %	TH0402FHA	\$5704
	1800	324TC	90.6/45.3	94.1 %	TH0404FHA	\$5704
50	3600	326TSC	112.0/56.0	93.0 %	TH0502FHA	\$7932
	1800	326TC	112.6/56.3	94.5 %	TH0504FHA	\$7232
60	3600	364TSC	133.4/66.7	93.6 %	TH0602FHA	\$9766
	1800	364TC	136.0/68.0	95.0 %	TH0604FHA	\$9622
75	3600	365TSC	166.8/83.4	93.6 %	TH0752FHA	\$12952
	1800	365TC	169.4/84.7	95.4 %	TH0754FHA	\$11306
100	1800	405TC	226/113	95.4 %	TH1004FHA	\$13996
125	1800	444TC	140	95.4 %	TH1254FHB	\$19096

Cast Iron Construction

◊ Not Applicable to Current EPAct Regulations
± Obsolete After Inventory is Depleted



C-FACE FOOTLESS
3 Phase, 60 Hz, 208-230/460 Volts
Totally Enclosed Fan Cooled Enclosure

HP	RPM	Frame	F/L Amps	Nominal Eff.	Model Number	List Price
.33	1800	56C	1.36/.68	70.0 %	NBY034FCA ◊	\$ 376
	1800	56C	1.36/.68	70.0 %	RBY034FCA ◊	\$ 436
.50	1800	56C	1.70/.85	80.0 %	NBY054NCA ◊ ±	\$ 410
	1800	56C	1.70/.85	80.0 %	NBY054FCA ◊	\$ 416
	1800	56C	1.70/.85	80.0 %	RBY054FCA ◊	\$ 478
.75	1800	56C	2.20/1.10	81.5 %	NBY074FCA	\$ 454
	1800	56C	2.20/1.10	81.5 %	RBY074FCA ±	\$ 520
1.0	1800	56C	3.30/1.65	79.0 %	NB0014FCA ±	\$ 494
	1800	56C	3.00/1.50	85.5%	NH0014FCA	\$ 558
	1800	56C	3.30/1.65	79.0 %	RB0014FCA ±	\$ 566
	1800	143TC	3.30/1.65	79.0 %	DB0014FCA ±	\$ 494
	1800	143TC	3.00/1.50	85.5 %	DH0014FCA	\$ 568
1.5	1800	56C	4.50/2.25	80.5 %	NBY154FCA ±	\$ 522
	1800	56C	4.50/2.25	80.5 %	RBY154FCA ±	\$ 598
	1800	56C	4.20/2.10	86.5 %	NHY154FCA	\$ 585
	1800	145TC	4.50/2.25	80.5 %	DBY154FCA ±	\$ 522
	1800	145TC	4.20/2.10	86.5 %	DHY154FCA	\$ 600
2.0	1800	56C	6.00/3.00	82.0 %	NB0024FCA ±	\$ 562
	1800	56C	5.20/2.60	86.5 %	NH0024FCA	\$ 638
	1800	56C	6.00/3.00	82.0 %	RB0024FCA ±	\$ 646
	1800	145TC	6.00/3.00	82.0 %	DB0024FCA ±	\$ 562
	1800	145TC	5.20/2.60	86.5 %	DH0024FCA	\$ 646
3.0	1800	182TC	8.00/4.00	87.5 %	DB0034FCA ±	\$ 624
	1800	182TC	7.80/3.90	89.5 %	DH0034FCA	\$ 718
5.0	1800	184TC	13.4/6.70	87.5 %	DB0054FCA ±	\$ 714
	1800	184TC	13.2/6.60	89.5 %	DH0054FCA	\$ 821
7.5	1800	213TC	19.6/9.80	89.5 %	DBY754FCA ±	\$ 964
	1800	213TC	18.0/9.00	91.7 %	DHY754FCA	\$1109
10	1800	215TC	25.8/12.9	89.5 %	DB0104FCA ±	\$1160
	1800	215TC	24.4/12.2	91.7 %	DH0104FCA	\$1435
15	1800	254TC	35.8/17.9	93.0 %	TH0154FCA	\$2286
20	1800	256TC	47.4/23.7	93.0 %	TH0204FCA	\$2684
25	1800	284TC	57.6/28.8	93.6 %	TH0254FCA	\$3519
30	1800	286TC	69.0/34.5	94.1 %	TH0304FCA	\$4059

■ Cast Iron Construction
 ◊ Not Applicable to EISA Premium Efficient Requirement
 ± Obsolete After Inventory is Depleted



FOOT MOUNTED BRAKEMOTORS
3 Phase, 60 Hz, 230/460 Volt
Totally Enclosed Fan Cooled Enclosure

HP	RPM	Frame	F/L Amps	Nominal Eff.	Brake Rating	Model Number	List Price
1.0	1800	B143T	3.30/1.65	79.0 %	3 Ft.Lb.	DB0014FSA003S ±	\$1192
	1800	B143T	3.00/1.50	85.5 %	3 Ft.Lb.	DH0014FSA003S	\$1266
	1800	B143T	3.30/1.65	79.0 %	6 Ft.Lb.	DB0014FSA006S ±	\$1210
	1800	B143T	3.00/1.50	85.5 %	6 Ft.Lb.	DH0014FSA006S	\$1284
1.5	1800	B143T	4.50/2.25	80.5 %	6 Ft.Lb.	DBY154FSA006S ±	\$1233
	1800	B145T	4.20/2.10	86.5 %	6 Ft.Lb.	DHY154FSA006S	\$1311
	1800	B145T	4.50/2.25	80.5 %	10 Ft.Lb.	DBY154FSA010S ±	\$1309
	1800	B145T	4.20/2.10	86.5 %	10 Ft.Lb.	DHY154FSA010S	\$1387
2.0	1800	B145T	6.00/3.00	82.0 %	6 Ft.Lb.	DB0024FSA006S ±	\$1252
	1800	B145T	5.20/2.60	86.5 %	6 Ft.Lb.	DH0024FSA006S	\$1366
	1800	B145T	6.00/3.00	82.0 %	10 Ft.Lb.	DB0024FSA010S ±	\$1319
	1800	B145T	5.20/2.60	86.5 %	10 Ft.Lb.	DH0024FSA010S	\$1403
3.0	1800	B182T	8.00/4.00	87.5 %	10 Ft.Lb.	DB0034FSA010S ±	\$1985
	1800	B182T	7.80/3.90	89.5 %	10 Ft.Lb.	DH0034FSA010S	\$2079
	1800	B182T	8.00/4.00	87.5 %	15 Ft.Lb.	DB0034FSA015S ±	\$2017
	1800	B182T	7.80/3.90	89.5 %	15 Ft.Lb.	DH0034FSA015S	\$2111
5.0	1800	B184T	13.4/6.70	87.5 %	15 Ft.Lb.	DB0054FSA015S ±	\$2145
	1800	B184T	13.2/6.60	89.5 %	15 Ft.Lb.	DH0054FSA015S	\$2252
	1800	B184T	13.4/6.70	87.5 %	25 Ft.Lb.	DB0054FSA025S ±	\$2709
	1800	B184T	13.2/6.60	89.5 %	25 Ft.Lb.	DH0054FSA025S	\$2816
7.5	1800	B213T	19.6/9.80	89.5 %	25 Ft.Lb.	DBY754FSA025S ±	\$3127
	1800	B213T	18.0/9.00	91.7 %	25 Ft.Lb.	DHY754FSA025S	\$3272
	1800	B213T	19.6/9.80	89.5 %	35 Ft.Lb.	DBY754FSA035S ±	\$3327
	1800	B213T	18.0/9.00	91.7 %	35 Ft.Lb.	DHY754FSA035S	\$3472
10	1800	B215T	25.8/12.9	89.5 %	35 Ft.Lb.	DB0104FSA035S ±	\$3577
	1800	B215T	24.4/12.2	91.7 %	35 Ft.Lb.	DH0104FSA035S	\$3852
	1800	B215T	25.8/12.9	89.5 %	50 Ft.Lb.	DB0104FSA050S ±	\$4711
	1800	B215T	24.4/12.2	91.7 %	50 Ft.Lb.	DH0104FSA050S	\$4986
15	1800	B254T	35.8/17.9	93.0 %	50 Ft.Lb.	TH0154FSA050S	\$5305
	1800	B254T	47.4/23.7	93.0 %	75 Ft.Lb.	TH0154FSA075S	\$5671
20	1800	B256T	57.6/28.8	93.6 %	75 Ft.Lb.	TH0204FSA075S	\$5831
	1800	B256T	69.0/34.5	94.1 %	105 Ft.Lb.	TH0204FSA105S	\$6197

± Obsolete After Inventory is Depleted



C-FACE FOOTLESS BRAKEMOTORS
3 Phase, 60 Hz, 230/460 Volt
Totally Enclosed Fan Cooled Enclosure

HP	RPM	Frame	F/L Amps	Nominal Eff.	Brake Rating	Model Number	List Price
.33	1800	B56C	1.36/.68	70.0	3 Ft.Lb.	NBY034FTA003S ◊	\$ 918
	1800	B56C	1.36/.68	70.0	3 Ft.Lb.	RBY034FTA003S ◊	\$ 978
.50	1800	B56C	1.70/.85	80.0	3 Ft.Lb.	NBY054FSA003S ◊	\$ 958
	1800	B56C	1.70/.85	80.0	3 Ft.Lb.	RBY054FTA003S ◊	\$1020
.75	1800	B56C	2.20/1.10	81.5	3 Ft.Lb.	NBY074FTA003S ◊	\$1040
	1800	B56C	2.20/1.10	81.5	3 Ft.Lb.	RBY074FTA003S ◊	\$1106
1.0	1800	B56C	3.30/1.65	79.0	3 Ft.Lb.	NB0014FTA003S ±	\$1028
	1800	B56C	3.30/1.65	79.0	6 Ft.Lb.	NB0014FTA006S ±	\$1080
	1800	B56C	3.00/1.50	85.5	3 Ft.Lb.	NH0014FTA003S	\$1102
	1800	B56C	3.00/1.50	85.5	6 Ft.Lb.	NH0014FTA006S	\$1124
	1800	B56C	3.30/1.65	79.0	3 Ft.Lb.	RB0014FTA003S ±	\$1130
	1800	B56C	3.30/1.65	79.0	6 Ft.Lb.	RB0014FTA006S ±	\$1152
	1800	B143TC	3.30/1.65	79.0	3 Ft.Lb.	DB0014FTA003S ±	\$1248
	1800	B143TC	3.30/1.65	79.0	6 Ft.Lb.	DB0014FTA006S ±	\$1270
	1800	B143TC	3.00/1.50	85.5	3 Ft.Lb.	DH0014FTA003S	\$1322
1800	B143TC	3.00/1.50	85.5	6 Ft.Lb.	DH0014FTA006S	\$1344	
1.5	1800	B56C	4.50/2.25	80.5 %	6 Ft.lb.	NBY154FTA006S ±	\$1190
	1800	B56C	4.20/2.10	86.5 %	10 Ft.Lb	NBY154FTA010S ±	\$1254
	1800	B56C	4.50/2.25	80.5 %	6 Ft.Lb.	NHY154FTA006S	\$1268
	1800	B56C	4.20/2.10	86.5 %	10 Ft.Lb.	NHY154FTA010S	\$1332
	1800	B56C	4.50/2.25	80.5 %	6 Ft.Lb.	RBY154FTA006S ±	\$1202
	1800	B56C	4.50/2.25	80.5 %	10 Ft.Lb.	RBY154FTA010S ±	\$1266
	1800	B145TC	4.50/2.25	80.5 %	6 Ft.Lb.	DBY154FTA006S ±	\$1305
	1800	B145TC	4.20/2.10	86.5 %	10 Ft.Lb.	DBY154FTA010S ±	\$1369
	1800	B145TC	4.50/2.25	80.5 %	6 Ft.Lb.	DHY154FTA006S	\$1383
1800	B145TC	4.20/2.10	86.5 %	10 Ft.Lb.	DHY154FTA010S	\$1447	
2.0	1800	B56C	6.00/3.00	82.0 %	6 Ft.lb.	NB0024FTA006S ±	\$1310
	1800	B56C	5.20/2.60	86.5 %	10 Ft.Lb	NB0024FTA010S ±	\$1383
	1800	B56C	6.00/3.00	82.0 %	6 Ft.lb.	NH0024FTA006S	\$1394
	1800	B56C	5.20/2.60	86.5 %	10 Ft.Lb	NH0024FTA010S	\$1467
	1800	B56C	6.00/3.00	82.0 %	6 Ft.Lb.	RB0024FTA006S ±	\$1314
	1800	B56C	6.00/3.00	82.0 %	10 Ft.Lb.	RB0024FTA010S ±	\$1387
	1800	B145TC	6.00/3.00	82.0 %	6 Ft.Lb.	DB0024FTA006S ±	\$1310
	1800	B145TC	5.20/2.60	86.5 %	10 Ft.Lb.	DB0024FTA010S ±	\$1383
	1800	B145TC	6.00/3.00	82.0 %	6 Ft.Lb.	DH0024FTA006S	\$1394
1800	B145TC	5.20/2.60	86.5 %	10 Ft.Lb.	DH0024FTA010S	\$1467	
3.0	1800	B182TC	8.00/4.00	87.5 %	10 Ft.Lb.	DB0034FTA010S ±	\$2076
	1800	B182TC	7.80/3.90	89.5 %	15 Ft.Lb.	DB0034FTA015S ±	\$2121
	1800	B182TC	8.00/4.00	87.5 %	10 Ft.Lb.	DH0034FTA010S	\$2170
	1800	B182TC	7.80/3.90	89.5 %	15 Ft.Lb.	DH0034FTA015S	\$2215
5.0	1800	B184TC	13.4/6.70	87.5 %	15 Ft.Lb.	DB0054FTA015S ±	\$2229
	1800	B184TC	13.2/6.60	89.5 %	25 Ft.Lb.	DB0054FTA025S ±	\$2789
	1800	B184TC	13.4/6.70	87.5 %	15 Ft.Lb.	DH0054FTA015S	\$2336
	1800	B184TC	13.2/6.60	89.5 %	25 Ft.Lb.	DH0054FTA025S	\$2896

◊ Not Applicable to EISA Premium Efficient Requirement

± Obsolete After Inventory is Depleted

■ Cast Iron Construction

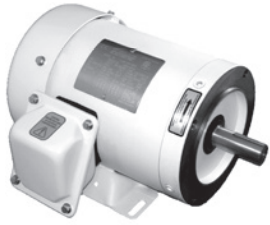


C-FACE FOOTLESS BRAKEMOTORS
3 Phase, 60 Hz, 230/460 Volt
Totally Enclosed Fan Cooled Enclosure

7.5	1800	B213TC	19.6/9.80	89.5 %	25 Ft.Lb.	DBY754FTA025S ±	\$3319
	1800	B213TC	18.0/9.00	91.7 %	35 Ft.Lb.	DBY754FTA035S ±	\$3511
	1800	B213TC	19.6/9.80	89.5 %	25 Ft.Lb.	DHY754FTA025S	\$3464
	1800	B213TC	18.0/9.00	91.7 %	35 Ft.Lb.	DHY754FTA035S	\$3656
10	1800	B215TC	25.8/12.9	89.5 %	35 Ft.Lb.	DB0104FTA035S ±	\$3678
	1800	B215TC	24.4/12.2	91.7 %	50 Ft.Lb.	DB0104FTA050S ±	\$4854
	1800	B215TC	25.8/12.9	89.5 %	35 Ft.Lb.	DH0104FTA035S	\$3953
	1800	B215TC	24.4/12.2	91.7 %	50 Ft.Lb.	DH0104FTA050S	\$5129
15	1800	B254TC	35.8/17.9	93.0 %	50 Ft.Lb.	TH0154FTA050S	\$5151
	1800	B254TC	47.4/23.7	93.0 %	75 Ft.Lb.	TH0154FTA075S	\$5517
20	1800	B256TC	57.6/28.8	93.6 %	75 Ft.Lb.	TH0204FTA075S	\$5603
	1800	B256TC	69.0/34.5	94.1 %	105 Ft.Lb.	TH0204FTA105S	\$5969

± Obsolete After Inventory is Depleted

■ Cast Iron Construction



STERLI-SEAL® (Washdown Duty)

3 Phase, 60 Hz, 230/460 Volt
Totally Enclosed Fan Cooled Enclosure

C-FACE FOOT MOUNTED

HP	RPM	Frame	F/L Amps	Nominal Eff.	Model Number	List Price
.50	3600	56C	1.50/.75	73.0 %	NBY052MHA⊠◇	\$ 526
	1800	56C	1.70/.85	80.0 %	NBY054MHA⊠◇	\$ 592
.75	3600	56C	2.20/1.10	74.0 %	NBY072MHA⊠◇	\$ 578
	1800	56C	2.20/1.10	81.5 %	NBY074MHA⊠◇	\$ 684
1.0	3600	56C	3.10/1.55	71.0 %	NB0012PHA ±	\$ 678
	3600	56C	3.00/1.50	77.0 %	NH0012PHA	\$ 745
	3600	143TC	3.00/1.50	77.0 %	DH0012PHA	\$ 757
	1800	56C	3.30/1.65	79.0 %	NB0014PHA ±	\$ 716
	1800	143TC	3.00/1.50	85.5 %	NH0014PHA	\$ 752
	1800	143TC	3.00/1.50	85.5 %	DH0014PHA	\$ 773
1.5	3600	56C	4.30/2.15	74.0 %	NBY152PHA ±	\$ 750
	3600	145TC	3.80/1.90	84.0 %	DHY152PHA	\$ 810
	1800	56C	4.50/2.25	80.5 %	NBY154PHA	\$ 744
	1800	56C	4.20/2.10	86.5 %	NHY154PHA	\$ 799
	1800	145TC	4.20/2.10	86.5 %	DHY154PHA	\$ 804
2.0	3600	56C	5.80/2.90	78.0 %	NB0022PHA ±	\$ 830
	3600	56C	5.00/2.50	85.5 %	NH0022PHA	\$ 940
	3600	145TC	5.00/2.50	85.5 %	DH0022PHA	\$ 953
	1800	56C	6.00/3.00	82.0 %	NB0024PHA ±	\$ 920
	1800	56C	5.20/2.60	86.5 %	NH0024PHA	\$ 975
	1800	145TC	5.20/2.60	86.5 %	DH0024PHA	\$ 994
3.0	3600	182TC	7.40/3.70	86.5 %	DH0032PHA	\$1398
	1800	182TC	7.80/3.90	89.5 %	DH0034PHA	\$1307
5.0	3600	184TC	11.6/5.80	88.5 %	DH0052PHA	\$1529
	1800	184TC	13.2/6.60	89.5 %	DH0054PHA	\$1480
7.5	3600	213TC	17.2/8.60	89.5 %	DHY752PHA	\$2033
	1800	213TC	18.0/9.00	91.7 %	DHY754PHA	\$1875
10	3600	215TC	22.4/11.2	90.2 %	DH0102PHA	\$2415
	1800	215TC	24.4/12.2	91.7 %	DH0104PHA	\$2132
15	3600	254TC	34.8/17.4	91.0 %	TH0152PHA	\$4110
	1800	254TC	35.8/17.9	93.0 %	TH0154PHA	\$4046
20	3600	256TC	46.4/23.2	91.0 %	TH0202PHA	\$4720
	1800	256TC	47.4/23.7	93.0 %	TH0204PHA	\$4692
25	3600	284TSC	56.8/28.4	91.7 %	TH0252PHA	\$5900
	1800	284TC	57.6/28.8	93.6 %	TH0254PHA	\$5724
30	3600	286TSC	68.2/34.1	91.7 %	TH0302PHA	\$7306
	1800	286TC	69.0/34.5	94.1 %	TH0304PHA	\$6910
40	3600	324TSC	90.2/45.1	92.4 %	TH0402PHA	\$9811
	1800	324TC	90.6/45.3	94.1 %	TH0404PHA	\$9158
50	3600	326TSC	112.0/56.0	93.0 %	TH0502PHA	\$12810
	1800	326TC	112.6/56.3	94.5 %	TH0504PHA	\$11679
60	3600	364TSC	133.4/66.7	93.6 %	TH0602PHA	\$14014
	1800	364TC	136.0/68.0	95.0 %	TH0604PHA	\$13807
75	3600	365TSC	166.8/83.4	93.6 %	TH0752PHA	\$17938
	1800	365T	169.4/84.7	95.4 %	TH0754PHA	\$15659

◇ Not Applicable to EISA Premium Efficient Requirement

± Obsolete After Inventory is Depleted

■ Cast Iron Construction



STERLI-SEAL® (Washdown Duty)

3 Phase, 60 Hz, 230/460 Volt
Totally Enclosed Fan Cooled Enclosure

C-FACE FOOTLESS

HP	RPM	Frame	F/L Amps	Nominal Eff.	Model Number	List Price
.33	1800	56C	1.36/.68	70.0 %	NBY034MCA*◇	\$ 496
.50	1800	56C	1.70/.85	80.0 %	NBY054MCA*◇	\$ 576
.75	1800	56C	2.20/1.10	81.5 %	NBY074MCA*◇	\$ 666
1.0	1800	56C	3.30/1.65	79.0 %	NB0014PCA ±	\$ 696
	1800	143TC	3.00/1.50	85.5 %	NH0014PCA	\$ 788
	1800	143TC	3.30/1.65	79.0 %	DB0014PCA ±	\$ 712
	1800	143TC	3.00/1.50	85.5 %	DH0014PCA	\$ 824
1.5	1800	56C	4.50/2.25	80.5 %	NBY154PCA ±	\$ 742
	1800	56C	4.20/2.10	86.5 %	NHY154PCA	\$ 847
	1800	145TC	4.50/2.25	80.5 %	DBY154PCA ±	\$ 742
2.0	1800	145TC	4.20/2.10	86.5 %	DHY154PCA	\$ 853
	1800	56C	6.00/3.00	82.0 %	NB0024PCA ±	\$ 844
	1800	56C	5.20/2.60	86.5 %	NH0024PCA	\$ 952
3.0	1800	145TC	6.00/3.00	82.0 %	DB0024PCA ±	\$ 844
	1800	145TC	5.20/2.60	86.5 %	DH0024PCA	\$ 971
	1800	182TC	8.00/4.00	87.5 %	DB0034PCA ±	\$1108
5.0	1800	182TC	7.80/3.90	89.5 %	DH0034PCA	\$1274
	1800	184TC	13.4/6.70	87.5 %	DB0054PCA ±	\$1256
7.5	1800	184TC	13.2/6.60	89.5 %	DH0054PCA	\$1444
	1800	213TC	19.6/9.80	89.5 %	DBY754PCA ±	\$1594
10	1800	213TC	18.0/9.00	91.7 %	DHY754PCA	\$1833
	1800	215TC	25.8/12.9	89.5 %	DB0104PCA ±	\$1808
	1800	215TC	24.4/12.2	91.7 %	DH0104PCA	\$2079

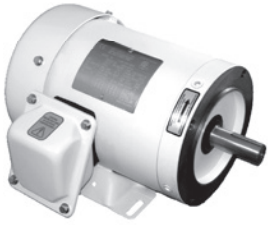
- * Totally Enclosed Non Ventilated
- ◇ Not Applicable to Current EPAct Regulations
- ± Obsolete After Inventory is Depleted

STERLI-SEAL® (Washdown Duty)

3 Phase, 60 Hz, 230/460 Volt
INVERTER DUTY (10:1 Constant Torque 6-60 Hz. Operation)
Totally Enclosed Fan Cooled Enclosure

HP	RPM	Frame	F/L Amps	Nominal Eff.	Model Number	List Price
1	1800	143TC	3.30/1.65	82.5 %	DI0014PCI ◇	\$1591
1.5	1800	145TC	4.80/2.40	84.0 %	DIY154PCI ◇	\$1702
2.0	1800	145TC	6.10/3.05	84.0 %	DI0024PCI ◇	\$1792
3.0	1800	182TC	7.60/3.80	87.5 %	DI0034PCI ◇	\$1821
5.0	1800	184TC	13.0/6.50	87.5 %	DI0054PCI ◇	\$1952
7.5	1800	213TC	18.2/9.10	89.5 %	DIY754PCI ◇	\$2547
10	1800	215TC	24.0/12.0	89.5 %	DI0104PCI ◇	\$3017

- ◇ Not Applicable to Current EPAct Regulations



STERLI-SEAL® Encapsulated

3 Phase, 60 Hz, 208-230/460 Volts

Totally Enclosed Fan Cooled Enclosure

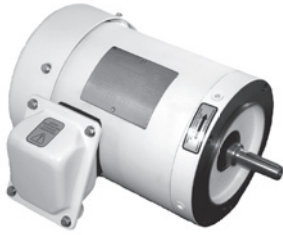
C-FACE FOOT MOUNTED

HP	RPM	Frame	F/L Amps	Nominal Eff.	Model Number	List Price
.33	1800	56C	1.36/.68	70.0 %	NBY034MHA-E [⊛]	\$1109
.50	3600	56C	1.50/.75	73.0 %	NBY052MHA-E [⊛]	\$1123
	1800	56C	1.70/.85	80.0 %	NBY054MHA-E [⊛]	\$1189
.75	3600	56C	2.20/1.10	74.0 %	NBY072MHA-E [⊛]	\$1175
	1800	56C	2.20/1.10	81.5 %	NBY074MHA-E [⊛]	\$1281
1.0	3600	56C	3.10/1.55	71.0 %	NB0012PHA-E [±]	\$1275
	3600	56C	3.00/1.50	77.0 %	NH0012PHA-E	\$1245
	1800	56C	3.30/1.65	79.0 %	NB0014PHA-E [±]	\$1313
	1800	56C	3.00/1.50	85.5 %	NH0014PHA-E [±]	\$1349
	1800	143TC	3.00/1.50	85.5 %	DH0014PHA-E	\$1370
1.5	3600	56C	4.30/2.15	74.0 %	NBY152PHA-E [±]	\$1347
	3600	56C	3.80/1.90	84.0 %	NHY152PHA-E	\$1396
	3600	143TC	3.80/1.90	84.0 %	DHY152PHA-E	\$1407
	1800	56C	4.50/2.25	80.5 %	NBY154PHA-E [±]	\$1341
	1800	56C	4.20/2.10	86.5 %	NHY154PHA-E	\$1396
	1800	145TC	4.20/2.10	86.5 %	DHY154PHA-E	\$1401
2.0	3600	56C	5.80/2.90	78.0 %	NB0022PHA-E [±]	\$1427
	3600	56C	5.00/2.50	85.5 %	NH0022PHA-E	\$1537
	3600	145TC	5.00/2.50	85.5 %	DH0022PHA-E	\$1550
	1800	56C	6.00/3.00	82.0 %	NB0024PHA-E [±]	\$1517
	1800	56C	5.20/2.60	86.5 %	NH0024PHA-E	\$1572
	1800	145TC	5.20/2.60	86.5 %	DH0024PHA-E	\$1591
3.0	3600	182TC	7.40/3.70	86.5 %	DH0032PHA-E	\$1995
	1800	182TC	7.80/3.90	89.5 %	DH0034PHA-E	\$1904
5.0	3600	184TC	11.6/5.80	88.5 %	DH0052PHA-E	\$2126
	1800	184TC	13.2/6.60	89.5 %	DH0054PHA-E	\$2077
7.5	3600	213TC	17.2/8.60	89.5 %	DHY752PHA-E	\$2630
	1800	213TC	18.0/9.00	91.7 %	DHY754PHA-E	\$2472
10.0	3600	215TC	22.4/11.2	90.2 %	DH0102PHA-E	\$3012
	1800	215TC	24.4/12.2	91.7 %	DH0104PHA-E	\$2729

⊛ Totally Enclosed Non Ventilated

⊛ Not Applicable to Current EPAct Regulations

± Obsolete After Inventory is Depleted



STERLI-SEAL® Encapsulated

3 Phase, 60 Hz, 208-230/460 Volts

Totally Enclosed Fan Cooled Enclosure

C-FACE FOOTLESS

HP	RPM	Frame	F/L Amps	Nominal Eff.	Model Number	List Price
.33	1800	56C	1.36/.68	70.0 %	NBY034MCA-E [⊛]	\$1093
.50	1800	56C	1.70/.85	80.0 %	NBY054MCA-E [⊛]	\$1173
.75	1800	56C	2.20/1.10	81.5 %	NBY074MCA-E [⊛]	\$1263
1.0	1800	56C	3.30/1.65	79.0 %	NB0014PCA-E ±	\$1293
	1800	143TC	3.00/1.50	85.5 %	NH0014PCA-E	\$1385
	1800	143TC	3.30/1.65	79.0 %	DB0014PCA-E ±	\$1309
	1800	143TC	3.00/1.50	85.5 %	DH0014PCA-E	\$1421
1.5	1800	56C	4.50/2.25	80.5 %	NBY154PCA-E ±	\$1339
	1800	56C	4.20/2.10	86.5 %	NHY154PCA-E	\$1444
	1800	145TC	4.50/2.25	80.5 %	DBY154PCA-E ±	\$1339
	1800	145TC	4.20/2.10	86.5 %	DHY154PCA-E	\$1450
2.0	1800	56C	6.00/3.00	82.0 %	NB0024PCA-E ±	\$1441
	1800	56C	5.20/2.60	86.5 %	NH0024PCA-E	\$1549
	1800	145TC	6.00/3.00	82.0 %	DB0024PCA-E ±	\$1441
	1800	145TC	5.20/2.60	86.5 %	DH0024PCA-E	\$1568
3.0	1800	182TC	8.00/4.00	87.5 %	DB0034PCA-E ±	\$1705
	1800	182TC	7.80/3.90	89.5 %	DH0034PCA-E	\$1871
5.0	1800	184TC	13.4/6.70	87.5 %	DB0054PCA-E ±	\$1853
	1800	184TC	13.2/6.60	89.5 %	DH0054PCA-E	\$2041
7.5	1800	213TC	19.6/9.80	89.5 %	DBY754PCA-E ±	\$2191
	1800	213TC	18.0/9.00	91.7 %	DHY754PCA-E	\$2430
10	1800	215TC	25.8/12.9	89.5 %	DB0104PCA-E ±	\$2405
	1800	215TC	24.4/12.2	91.7 %	DH0104PCA-E	\$2676

⊛ Totally Enclosed Non Ventilated


STERLI-SEAL® STAINLESS

3 Phase, 60 Hz, 208-230/460 Volts

C-FACE FOOT MOUNTED

HP	RPM	Frame	F/L Amps	Nominal Eff.	Model Number	List Price
.33	3600	56C	1.20/.60	62.0 %	SBY032MHA [⊗] ◇	\$ 596
	1800	56C	1.36/.68	70.0 %	SBY034MHA [⊗] ◇	\$ 668
.50	3600	56C	1.50/.75	73.0 %	SBY052MHA [⊗] ◇	\$ 612
	1800	56C	1.70/.85	80.0 %	SBY054MHA [⊗] ◇	\$ 688
.75	3600	56C	2.20/1.10	74.0 %	SBY072MHA [⊗] ◇	\$ 672
	1800	56C	2.20/1.10	81.5 %	SBY074MHA [⊗] ◇	\$ 796
1.0	3600	56C	3.10/1.55	71.0 %	SB0012PHA ±	\$ 788
	3600	56C	2.90/1.45	77.0 %	SH0012PHA	\$ 902
	3600	143TC	2.90/1.45	77.0 %	XH0012PHA	\$ 906
	1800	56C	3.30/1.65	79.0 %	SB0014MHA [⊗] ±	\$ 884
	1800	56C	3.00/1.50	85.5 %	SH0014MHA	\$1078
	1800	56C	3.30/1.65	79.0 %	SB0014PHA ±	\$ 830
	1800	56C	3.00/1.50	85.5 %	SH0014PHA	\$ 980
	1800	143TC	3.00/1.50	85.5 %	XH0014PHA	\$1026
1.5	3600	56C	4.30/2.15	74.0 %	SBY152PHA ±	\$ 872
	3600	56C	3.80/1.90	84.0 %	SHY152PHA	\$1028
	3600	143TC	3.80/1.90	84.0 %	XHY152PHA	\$1079
	1800	56C	4.50/2.25	80.5 %	SBY154PHA ±	\$ 866
	1800	56C	4.20/2.10	86.5 %	SHY154PHA	\$1022
	1800	145TC	4.20/2.10	86.5 %	XHY154PHA	\$ 1067
2.0	3600	56C	5.80/2.90	78.0 %	SB0022PHA ±	\$ 966
	3600	56C	5.00/2.50	85.5 %	SH0022PHA	\$1140
	3600	145TC	5.00/2.50	85.5 %	XH0022PHA	\$1293
	1800	56C	6.00/3.00	82.0 %	SB0024PHA ±	\$ 986
	1800	56C	5.20/2.60	86.5 %	SH0024PHA	\$1163
	1800	145TC	5.20/2.60	86.5 %	XH0024PHA	\$1267
3.0	3600	145TC	8.00/4.00	86.9 %	XBH0032PHA ±	\$1626
	3600	145TC	7.20/3.60	87.5 %	XHH0032PHA	\$1984
	3600	182TC	7.40/3.70	86.5 %	XH0032PHA	\$1985
	1800	182TC	7.80/3.90	89.5 %	XH0034PHA	\$1904
5.0	3600	184TC	11.6/5.80	88.5 %	XH0052PHA	\$2293
	1800	184TC	13.2/6.60	89.5 %	XH0054PHA	\$2201
7.5	3600	213TC	17.2/8.60	89.5 %	XHY752PHA	\$3326
	1800	213TC	18.0/9.00	91.7 %	XHY754PHA	\$3205
10	3600	215TC	22.4/11.2	90.2 %	XH0102PHA	\$3633
	1800	215TC	24.4/12.2	91.7 %	XH0104PHA	\$3513
15	3600	254TC	34.8/17.4	91.0 %	XH0152PHA-1	\$5513
	1800	254TC	35.8/17.9	92.4 %	XH0154PHA-1	\$5426
20	3600	256TC	46.4/23.2	91.0 %	XH0202PHA-1	\$5909
	1800	256TC	47.4/23.7	93.0 %	XH0204PHA-1	\$5874
25	3600	284TSC	56.8/28.4	91.7 %	XH0252PHA-1	\$7098
	1800	284TC	57.6/28.8	93.6 %	XH0254PHA-1	\$6970
30	3600	286TSC	68.2/34.1	91.7 %	XH0302PHA-1	\$7342
	1800	286TC	69.0/34.5	93.6 %	XH0304PHA-1	\$7220

[⊗] Totally Enclosed Non Ventilated

[◇] Not Applicable to Current EPAct Regulations

[±] Obsolete After Inventory is Depleted



STERLI-SEAL® STAINLESS

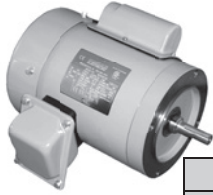
3 Phase, 60 Hz, 208-230/460 Volts

Totally Enclosed Fan Cooled Enclosure

C-FACE FOOTLESS

HP	RPM	Frame	F/L Amps	Nominal Eff.	Model Number	List Price
.33	1800	56C	1.36/1.68	70.0 %	SBY034MCA*◇	\$ 664
.50	1800	56C	1.70/.85	80.0 %	SBY054MCA*◇	\$ 682
	1800	56C	1.70/.85	80.0 %	SBY054PCA ◇	\$ 688
	1200	56C	2.30/1.15	74.0 %	SBY056PCA ◇	\$ 786
	900	56C	1.90/.950	71.0 %	SBY058PCA ◇	\$ 830
.75	1800	56C	2.20/1.10	81.5 %	SBY074MCA*◇	\$ 792
1.0	1800	56C	3.30/1.65	79.0 %	SB0014MCA*	\$ 880
	1800	56C	3.00/1.50	85.5 %	SH0014MCA*	\$1074
	1800	56C	3.30/1.65	79.0 %	SB0014PCA	\$ 826
	1800	56C	3.00/1.50	85.5 %	SH0014PCA	\$ 966
	1800	143TC	3.30/1.65	79.0 %	XB0014PCA ±	\$ 852
	1800	143TC	3.00/1.50	85.5 %	XH0014PCA	\$ 980
1.5	1800	56C	4.50/2.25	80.5 %	SBY154PCA ±	\$ 862
	1800	56C	4.20/2.10	86.5 %	SHY154PCA	\$1004
	1800	145TC	4.50/2.25	80.5 %	XBY154PCA ±	\$ 888
	1800	145TC	4.20/2.10	86.5 %	XHY154PCA	\$1021
2.0	1800	56C	6.00/3.00	82.0 %	SB0024PCA ±	\$ 982
	1800	56C	5.20/2.60	86.5 %	SH0024PCA	\$1150
	1800	145TC	6.00/3.00	82.0 %	XB0024PCA ±	\$1012
	1800	145TC	5.20/2.60	86.5 %	XH0024PCA	\$1164
3.0	1800	182TC	8.00/4.00	87.5 %	XB0034PCA ±	\$1616
	1800	182TC	7.80/3.90	89.5 %	XH0034PCA	\$1858
5.0	1800	184TC	13.4/6.70	87.5 %	XB0054PCA ±	\$1874
	1800	184TC	13.2/6.60	89.5 %	XH0054PCA	\$2155
7.5	1800	213TC	19.6/9.80	89.5 %	XBY754PCA ±	\$3016
	1800	213TC	18.0/9.00	91.7 %	XHY754PCA	\$3167
10	1800	215TC	25.8/12.9	89.5 %	XB0104PCA ±	\$3308
	1800	215TC	24.4/12.2	91.7 %	XH0104PCA	\$3473

* Totally Enclosed Non Ventilated
 ◇ Not Applicable to Current EPAct Regulations
 ± Obsolete After Inventory is Depleted



1 Phase, 60 Hz, 115-208/230 Volts
C- Face Footless – Totally Enclosed Fan Cooled

Rolled Steel Construction						
HP	RPM	Frame	F/L Amps	Nominal Eff.	Model Number	List Price
.33	1800	56C	5.4/2.70	59.0 %	NBY034FCW	\$ 380
.50	1800	56C	8.4/4.20	65.0 %	NBY054FCW	\$ 440
.75	1800	56C	12.0/6.0	64.0 %	NBY074FCW	\$ 520
1	1800	56C	14.4/7.2	67.0 %	NB0014FCW	\$ 596

Sterli-Seal® Rolled Steel Washdown Duty						
HP	RPM	Frame	F/L Amps	Nominal Eff.	Model Number	List Price
.33	1800	56C	5.4/2.70	59.0 %	NBY034PCW	\$ 499
.50	1800	56C	8.4/4.20	65.0 %	NBY054PCW	\$ 531
.75	1800	56C	12.0/6.0	64.0 %	NBY074PCW	\$ 619
1	1800	56C	14.4/7.2	67.0 %	NB0014PCW	\$ 704

Sterli-Seal® STAINLESS STEEL Washdown Duty						
HP	RPM	Frame	F/L Amps	Nominal Eff.	Model Number	List Price
.50	1800	56C	7.4/3.70	66.0 %	SBY054PCW	\$ 862
.75	1800	56C	11.2/5.6	67.0 %	SBY074PCW	\$ 974
1	1800	56C	15.4/7.7	70.5 %	SB0014PCW	\$ 996

C- Face Foot Mounted – Totally Enclosed Fan Cooled

Rolled Steel Construction						
HP	RPM	Frame	F/L Amps	Nominal Eff.	Model Number	List Price
.33	1800	56C	5.4/2.70	59.0 %	NBY034FHW	\$ 406
.50	1800	56C	8.4/4.20	65.0 %	NBY054FHW	\$ 466
.75	1800	56C	12.0/6.0	64.0 %	NBY074FHW	\$ 546
1	1800	56C	14.4/7.2	67.0 %	NB0014FHW	\$ 622

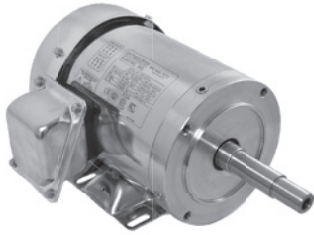
Sterli-Seal® STAINLESS STEEL Washdown Duty						
HP	RPM	Frame	F/L Amps	Nominal Eff.	Model Number	List Price
.50	1800	56C	7.4/3.70	66.0 %	SBY054PHW	\$ 868
.75	1800	56C	11.2/5.6	67.0 %	SBY074PHW	\$ 974
1	1800	56C	15.4/7.7	70.5 %	SB0014PHW	\$ 996

Foot Mounted – Totally Enclosed Fan Cooled

Sterli-Seal® STAINLESS STEEL Washdown Duty						
HP	RPM	Frame	F/L Amps	Nominal Eff.	Model Number	List Price
.50	1800	56	7.4/3.70	66.0 %	SBY054PFW	\$ 862
.75	1800	56	11.2/5.6	67.0 %	SBY074PFW	\$ 912
1	1800	56	15.4/7.7	70.5 %	SB0014PFW	\$ 936

C- Face Footless Jet Pump Mounting – Totally Enclosed Fan Cooled

Sterli-Seal® STAINLESS STEEL Washdown Duty						
HP	RPM	Frame	F/L Amps	Nominal Eff.	Model Number	List Price
.75	3600	56J	10.2/5.10	67.0 %	SBY072PJW	\$1070
1.5	3600	56J	17.8/8.90	76.0 %	SBY152PJW	\$1092



STERLI-SEAL® STAINLESS

3 Phase, 60 Hz, 208-230/460 Volts

Close Coupled Pump Motors

HP	RPM	Frame	F/L Amps	Nominal Eff.	Model Number	List Price
1.0	1800	140JM	3.30/1.15	79.0 %	XB0014PJA ±	\$ 960
	1800	140JM	3.00/1.50	85.5 %	XH0014PJA	\$1104
1.5	3600	140JM	4.30/2.15	74.0 %	XBY152PJA ±	\$1012
	3600	140JM	3.80/1.90	84.0 %	XHY152PJA	\$1164
	1800	140JM	4.50/2.25	80.5 %	XBY154PJA ±	\$ 996
	1800	140JM	4.20/2.10	86.5 %	XHY154PJA	\$1145
	3600	140JM	5.80/2.90	78.0 %	XB0022PJA ±	\$1216
2.0	3600	140JM	5.00/2.50	85.5 %	XH0022PJA	\$1398
	1800	140JM	6.00/3.00	82.0 %	XB0024PJA ±	\$1192
	1800	140JM	5.20/2.60	86.5 %	XH0024PJA	\$1371
3.0	3600	180JM	7.42/3.71	83.5 %	XB0032PJA ±	\$1964
	3600	180JM	7.40/3.70	86.5 %	XH0032PJA	\$2259
	1800	180JM	8.00/4.00	87.5 %	XB0034PJA ±	\$1940
	1800	180JM	7.80/3.90	89.5 %	XH0034PJA	\$2231
5.0	3600	180JM	12.1/6.05	85.5 %	XB0052PJA ±	\$2140
	3600	180JM	11.6/5.80	88.5 %	XH0052PJA	\$2461
	1800	180JM	13.4/6.70	87.5 %	XB0054PJA ±	\$2056
	1800	180JM	13.2/6.60	89.5 %	XH0054PJA	\$2364
7.5	3600	210JM	17.8/8.90	87.0 %	XBY752PJA ±	\$3540
	3600	210JM	17.2/8.60	89.5 %	XHY752PJA	\$4071
	1800	210JM	19.6/9.80	89.5 %	XBY754PJA ±	\$3412
	1800	210JM	18.0/9.00	91.7 %	XHY754PJA	\$3924
10.0	3600	210JM	23.2/11.6	88.0 %	XB0102PJA ±	\$3856
	3600	210JM	22.4/11.2	90.2 %	XH0102PJA	\$4434
	1800	210JM	25.8/12.9	89.5 %	XB0104PJA ±	\$3732
	1800	210JM	24.4/12.2	91.7 %	XH0104PJA	\$4292
15	3600	254JM	34.8/17.4	91.0 %	XH0152PJA-M	\$7138
	1800	254JM	35.8/17.9	92.4 %	XH0154PJA-M	\$7051
20	3600	256JM	46.4/23.2	91.0 %	XH0202PJA-M	\$7534
	1800	256JM	47.4/23.7	93.0 %	XH0204PJA-M	\$7499
25	3600	284JM	56.8/28.4	91.7 %	XH0252PJA-M	\$8723
	1800	284JM	57.6/28.8	93.6 %	XH0254PJA-M	\$8595
30	3600	286JM	68.2/34.1	91.7 %	XH0302PJA-M	\$8839
	1800	286JM	69.0/34.5	93.6 %	XH0304PJA-M	\$8717

± Obsolete After Inventory is Depleted



STERLI-SEAL® Inverter Duty Stainless

3 Phase, 60 Hz, 230/460 Volt**

Class "H" (Spike Resistant) Insulation per NEMA MG-1, Part 31

Class "H" Thermally Protected (10:1 Constant Torque)

Totally Enclosed Fan Cooled Enclosure

HP	RPM	Frame	Mounting*	F/L Amps	Nominal Eff.	Model Number	List Price
.50	1800	56C	Footed	1.82/1.91	78.0%	SIY054MHI☼	\$1664
.50	1800	56C	Footless	1.82/1.91	78.0%	SIY054MCI☼	\$1648
.75	1800	56C	Footed	2.20/1.10	81.0%	SIY074PHI	\$1884
.75	1800	56C	Footless	2.20/1.10	81.0%	SIY074PCI	\$1876
1.0	1800	56C	Footed	3.30/1.65	82.5%	SI0014PHI	\$1956
1.0	1800	140TC	Footed	3.30/1.65	82.5%	XI0014PHI	\$1956
1.0	1800	56C	Footless	3.30/1.65	82.5%	SI0014PCI	\$1948
1.0	1800	140TC	Footless	3.30/1.65	82.5%	XI0014PCI	\$1948
1.5	1800	56C	Footed	4.80/2.40	84.0%	SIY154PHI	\$2096
1.5	1800	140TC	Footed	4.80/2.40	84.0%	XIY154PHI	\$2096
1.5	1800	56C	Footless	4.80/2.40	84.0%	SIY154PCI	\$2080
1.5	1800	140TC	Footless	4.80/2.40	84.0%	XIY154PCI	\$2080
2.0	1800	56C	Footed	6.10/3.05	84.0%	SI0024PHI	\$2236
2.0	1800	140TC	Footed	6.10/3.05	84.0%	XI0024PHI	\$2236
2.0	1800	56C	Footless	6.10/3.05	84.0%	SI0024PCI	\$2220
2.0	1800	140TC	Footless	6.10/3.05	84.0%	XI0024PCI	\$2220
3.0	1800	180TC	Footed	7.60/3.80	87.5%	XI0034PHI	\$2452
3.0	1800	180TC	Footless	7.60/3.80	87.5%	XI0034PCI	\$2432
5.0	1800	180TC	Footed	13.0/6.50	87.5%	XI0054PHI	\$2856
5.0	1800	180TC	Footless	13.0/6.50	87.5%	XI0054PCI	\$2836
7.5	1800	210TC	Footed	18.2/9.10	89.5%	XIY754PHI	\$4328
7.5	1800	210TC	Footless	18.2/9.10	89.5%	XIY754PCI	\$4316
10	1800	210TC	Footed	24.0/12.0	89.5%	XI0104PHI	\$4944
10	1800	210TC	Footless	24.0/12.0	89.5%	XI0104PCI	\$4928

*All Motors are C-Face construction **Other voltages and frequencies available, contact factory

☼ Totally Enclosed Non Ventilated



STERLI-SEAL® STAINLESS Encapsulated
3 Phase, 60 Hz, 208-230/460 Volts
C-FACE FOOT MOUNTED

HP	RPM	Frame	F/L Amps	Nominal Eff.	Model Number	List Price
.33	3600	56C	1.20/.60	62.0 %	SBY032MHA-E [⊛]	\$1193
	1800	56C	1.36/.68	70.0 %	SBY034MHA-E [⊛]	\$1265
.50	3600	56C	1.50/.75	73.0 %	SBY052MHA-E [⊛]	\$1209
	1800	56C	1.70/.85	80.0 %	SBY054MHA-E [⊛]	\$1285
.75	3600	56C	2.20/1.10	74.0 %	SBY072MHA-E [⊛]	\$1269
	1800	56C	2.20/1.10	81.5 %	SBY074MHA-E [⊛]	\$1393
1.0	3600	56C	3.10/1.55	71.0 %	SB0012PHA-E [±]	\$1385
	3600	56C	2.90/1.45	77.0 %	SH0012PHA-E	\$1499
	3600	143TC	2.90/1.45	77.0 %	XH0012PHA-E	\$1503
	1800	56C	3.30/1.65	79.0 %	SB0014MHA-E ^{⊛±}	\$1481
	1800	56C	3.00/1.50	85.5 %	SH0014MHA-E	\$1675
	1800	56C	3.30/1.65	79.0 %	SB0014PHA-E [±]	\$1427
	1800	56C	3.00/1.50	85.5 %	SH0014PHA-E	\$1577
	1800	143TC	3.00/1.50	85.5 %	XH0014PHA-E	\$1623
1.5	3600	56C	4.30/2.15	74.0 %	SBY152PHA-E [±]	\$1469
	3600	56C	3.80/1.90	84.0 %	SHY152PHA-E	\$1625
	3600	143TC	3.80/1.90	84.0 %	XHY152PHA-E	\$1676
	1800	56C	4.50/2.25	80.5 %	SBY154PHA-E [±]	\$1463
	1800	56C	4.20/2.10	86.5 %	SHY154PHA-E	\$1619
	1800	145TC	4.20/2.10	86.5 %	XHY154PHA-E	\$1664
2.0	3600	56C	5.80/2.90	78.0 %	SB0022PHA-E [±]	\$1563
	3600	56C	5.00/2.50	85.5 %	SH0022PHA-E	\$1737
	3600	145TC	5.00/2.50	85.5 %	XH0022PHA-E	\$1890
	1800	56C	6.00/3.00	82.0 %	SB0024PHA-E [±]	\$1583
	1800	56C	5.20/2.60	86.5 %	SH0024PHA-E	\$1760
	1800	145TC	5.20/2.60	86.5 %	XH0024PHA-E	\$1864
3.0	3600	145TC	8.00/4.00	86.9 %	XBH0032PHA-E [±]	\$2223
	3600	145TC	7.20/3.60	87.5 %	XHH0032PHA-E	\$2581
	3600	182TC	7.40/3.70	86.5 %	XH0032PHA-E	\$2582
	1800	182TC	7.80/3.90	89.5 %	XH0034PHA-E	\$2501
5.0	3600	184TC	11.6/5.80	88.5 %	XH0052PHA-E	\$2890
	1800	184TC	13.2/6.60	89.5 %	XH0054PHA-E	\$2798
7.5	3600	213TC	17.2/8.60	89.5 %	XHY752PHA-E	\$3923
	1800	213TC	18.0/9.00	91.7 %	XHY754PHA-E	\$3802
10	3600	215TC	22.4/11.2	90.2 %	XH0102PHA-E	\$4230
	1800	215TC	24.4/12.2	91.7 %	XH0104PHA-E	\$4110

⊛ Totally Enclosed Non Ventilated

⊛ Not Applicable to Current EPAct Regulations

± Obsolete After Inventory is Depleted



STERLI-SEAL® STAINLESS Encapsulated

3 Phase, 60 Hz, 208-230/460 Volts

Totally Enclosed Fan Cooled Enclosure

C-FACE FOOTLESS

HP	RPM	Frame	F/L Amps	Nominal Eff.	Model Number	List Price
.33	1800	56C	1.36/.68	70.0 %	SBY034MCA-E⊛	\$1261
.50	1800	56C	1.70/.85	80.0 %	SBY054MCA-E⊛	\$1279
.75	1200	56C	2.30/1.15	74.0 %	SBY056PCA-E◇	\$1383
	900	56C	1.90/.950	71.0 %	SBY058PCA-E◇	\$1427
	1800	56C	1.70/.85	80.0 %	SBY074MCA-E⊛	\$1389
1.0	1800	56C	3.30/1.65	79.0 %	SB0014MCA-E⊛	\$1477
	1800	56C	3.00/1.50	85.5 %	SH0014MCA-E⊛	\$1671
	1800	56C	2.20/1.10	81.5 %	SB0014PCA-E	\$1423
	1800	56C	3.30/1.65	79.0 %	SH0014PCA-E	\$1563
	1800	143TC	3.00/1.50	85.5 %	XB0014PCA-E ±	\$1449
	1800	143TC	3.30/1.65	79.0 %	XH0014PCA-E	\$1577
1.5	1800	56C	3.00/1.50	85.5 %	SBY154PCA-E ±	\$1459
	1800	56C	3.30/1.65	79.0 %	SHY154PCA-E	\$1601
	1800	145TC	3.00/1.50	85.5 %	XBY154PCA-E ±	\$1485
	1800	145TC	4.50/2.25	80.5 %	XHY154PCA-E	\$1618
2.0	1800	56C	4.20/2.10	86.5 %	SB0024PCA-E ±	\$1579
	1800	56C	4.50/2.25	80.5 %	SH0024PCA-E	\$1747
	1800	145TC	4.20/2.10	86.5 %	XB0024PCA-E ±	\$1609
	1800	145TC	6.00/3.00	82.0 %	XH0024PCA-E	\$1761
3.0	1800	182TC	8.00/4.00	87.5 %	XB0034PCA-E ±	\$2213
	1800	182TC	7.80/3.90	89.5 %	XH0034PCA-E	\$2455
5.0	1800	184TC	13.4/6.70	87.5 %	XB0054PCA-E ±	\$2471
	1800	184TC	13.2/6.60	89.5 %	XH0054PCA-E	\$2752
7.5	1800	213TC	19.6/9.80	89.5 %	XBY754PCA-E ±	\$3613
	1800	213TC	18.0/9.00	91.7 %	XHY754PCA-E	\$3764
10	1800	215TC	25.8/12.9	89.5 %	XB0104PCA-E ±	\$3905
	1800	215TC	24.4/12.2	91.7 %	XH0104PCA-E	\$4070

⊛ Totally Enclosed Non Ventilated
 ◇ Not Applicable to Current EPAct Regulations
 ± Obsolete After Inventory is Depleted



STERLI-SEAL® STAINLESS Encapsulated

3 Phase, 60 Hz, 208-230/460 Volts

Close Coupled Pump Motors

HP	RPM	Frame	F/L Amps	Nominal Eff.	Model Number	List Price
1.0	1800	140JM	3.30/1.15	79.0 %	XB0014PJA-E ±	\$1557
	1800	140JM	3.00/1.50	85.5 %	XH0014PJA-E	\$1701
1.5	3600	140JM	4.30/2.15	74.0 %	XBY152PJA-E ±	\$1609
	3600	140JM	3.80/1.90	84.0 %	XHY152PJA-E	\$1761
	1800	140JM	4.50/2.25	80.5 %	XBY154PJA-E ±	\$1593
	1800	140JM	4.20/2.10	86.5 %	XHY154PJA-E	\$1742
2.0	3600	140JM	5.80/2.90	78.0 %	XB0022PJA-E ±	\$1813
	3600	140JM	5.00/2.50	85.5 %	XH0022PJA-E	\$1995
	1800	140JM	6.00/3.00	82.0 %	XB0024PJA-E ±	\$1789
	1800	140JM	5.20/2.60	86.5 %	XH0024PJA-E	\$1968
3.0	3600	180JM	7.42/3.71	83.5 %	XB0032PJA-E ±	\$2561
	3600	180JM	7.40/3.70	86.5 %	XH0032PJA-E	\$2856
	1800	180JM	8.00/4.00	87.5 %	XB0034PJA-E ±	\$2537
	1800	180JM	7.80/3.90	89.5 %	XH0034PJA-E	\$2828
5.0	3600	180JM	12.1/6.05	85.5 %	XB0052PJA-E ±	\$2737
	3600	180JM	11.6/5.80	88.5 %	XH0052PJA-E	\$3058
	1800	180JM	13.4/6.70	87.5 %	XB0054PJA-E ±	\$2653
	1800	180JM	13.2/6.60	89.5 %	XH0054PJA-E	\$2961
7.5	3600	210JM	17.8/8.90	87.0 %	XBY752PJA-E ±	\$4137
	3600	210JM	17.2/8.60	89.5 %	XHY752PJA-E	\$4668
	1800	210JM	19.6/9.80	89.5 %	XBY754PJA-E±	\$4009
	1800	210JM	18.0/9.00	91.7 %	XHY754PJA-E	\$4521
10.0	3600	210JM	23.2/11.6	88.0 %	XB0102PJA-E ±	\$4453
	3600	210JM	22.4/11.2	90.2 %	XH0102PJA-E	\$5031
	1800	210JM	25.8/12.9	89.5 %	XB0104PJA-E ±	\$4329
	1800	210JM	24.4/12.2	91.7 %	XH0104PJA-E	\$4889

± Obsolete After Inventory is Depleted



STERLI-SEAL® Inverter Duty *Stainless* Encapsulated

3 Phase, 60 Hz, 230/460 Volt**

Class "H" (Spike Resistant) Insulation per NEMA MG-1, Part 31

Class "H" Thermally Protected (10:1 Constant Torque)

Totally Enclosed Fan Cooled Enclosure

HP	RPM	Frame	Mounting*	F/L Amps	Nominal Eff.	Model Number	List Price
.50	1800	56C	Footed	1.82/1.91	78.0%	SIY054MHI-E☼	\$2261
.50	1800	56C	Footless	1.82/1.91	78.0%	SIY054MCI-E☼	\$2245
.75	1800	56C	Footed	2.20/1.10	81.0%	SIY074PHI-E	\$2481
.75	1800	56C	Footless	2.20/1.10	81.0%	SIY074PCI-E	\$2473
1.0	1800	56C	Footed	3.30/1.65	82.5%	SI0014PHI-E	\$2553
1.0	1800	140TC	Footed	3.30/1.65	82.5%	XI0014PHI-E	\$2553
1.0	1800	56C	Footless	3.30/1.65	82.5%	SI0014PCI-E	\$2545
1.0	1800	140TC	Footless	3.30/1.65	82.5%	XI0014PCI-E	\$2545
1.5	1800	56C	Footed	4.80/2.40	84.0%	SIY154PHI-E	\$2693
1.5	1800	140TC	Footed	4.80/2.40	84.0%	XIY154PHI-E	\$2693
1.5	1800	56C	Footless	4.80/2.40	84.0%	SIY154PCI-E	\$2677
1.5	1800	140TC	Footless	4.80/2.40	84.0%	XIY154PCI-E	\$2677
2.0	1800	56C	Footed	6.10/3.05	84.0%	SI0024PHI-E	\$2833
2.0	1800	140TC	Footed	6.10/3.05	84.0%	XI0024PHI-E	\$2833
2.0	1800	56C	Footless	6.10/3.05	84.0%	SI0024PCI-E	\$2817
2.0	1800	140TC	Footless	6.10/3.05	84.0%	XI0024PCI-E	\$2817
3.0	1800	180TC	Footed	7.60/3.80	87.5%	XI0034PHI-E	\$3049
3.0	1800	180TC	Footless	7.60/3.80	87.5%	XI0034PCI-E	\$3029
5.0	1800	180TC	Footed	13.00/6.5	87.5%	XI0054PHI-E	\$3453
5.0	1800	180TC	Footless	13.00/6.5	87.5%	XI0054PCI-E	\$3433
7.5	1800	210TC	Footed	18.20/9.1	89.5%	XIY754PHI-E	\$4925
7.5	1800	210TC	Footless	18.20/9.1	89.5%	XIY754PCI-E	\$4913
10	1800	210TC	Footed	24.0/12.0	89.5%	XI0104PHI-E	\$5541
10	1800	210TC	Footless	24.0/12.0	89.5%	XI0104PCI-E	\$5525

*All Motors are C-Face construction **Other voltages and frequencies available, contact factory

☼ Totally Enclosed Non Ventilating

Performance Data

Rolled Steel Frame Motors	
Models with Part Number Prefix DB, NB, and RB	25
Stainless Steel Frame Motors	
Models with Part Number Prefix SB or XB	25
Premium Efficient Rolled Steel Frame or Stainless Steel Frame Motors	
Models with Part Number Prefix NH, DH or XH.....	25
Premium Efficient Cast Iron Constructed Motors	
Totally Enclosed Fan Cooled Enclosure Part Number Prefix EH or TH.....	26
Bearing Sizes.....	29
Inverter Rated Motors.....	29
Wiring Diagrams.....	27-28
Model Number Codes.....	44

Dimensions

Rolled Steel Frame Motors

Totally Enclosed Non-Ventilated (TENV) Frame 56 C-Face Mounted	32
Totally Enclosed Fan Cooled (TEFC) Frames 56-210 Foot Mounted.....	30
Totally Enclosed Fan Cooled (TEFC) Frames 56-140 C-Face Mounted.....	33
Totally Enclosed Fan Cooled (TEFC) Frames 180-210 C-Face Mounted	34
Totally Enclosed Fan Cooled (TEFC) Foot Mounted Brakemotors.....	36
Totally Enclosed Fan Cooled (TEFC) C-Face Foot mounted Brakemotors.....	37
Totally Enclosed Fan Cooled (TEFC) C-Face Footless Brakemotors.....	38

Stainless Steel Frame Motors

Totally Enclosed Non-Ventilated (TENV) Frame 56 C-Face Mounted	39
Totally Enclosed Fan Cooled (TEFC) Frames 56-140 C-Face Mounted	40
Totally Enclosed Fan Cooled (TEFC) Frames 180-280 C-Face Mounted	41
Premium Efficient (TEFC) Frame 140-180JM Close Coupled Pump Mount	42
Premium Efficient (TEFC) Frame 210JM Close Coupled Pump Mount	43

Cast Iron Frame Motors

Totally Enclosed Fan Cooled (TEFC) Frame 250-444TS Foot Mounted	31
Totally Enclosed Fan Cooled (TEFC) Frame 140-360 C-Face Foot Mounted.....	31
Totally Enclosed Fan Cooled (TEFC) Frame 140-360 C-Face Footless.....	35
Totally Enclosed Fan Cooled (TEFC) Frame 250 Foot Mounted Brakemotors.....	36
Totally Enclosed Fan Cooled (TEFC) Frame 250 C-Face Foot Mounted Brakemotors.....	37
Totally Enclosed Fan Cooled (TEFC) C-Face Footless Frame 250 Brakemotors.....	38

Performance Data

**Frame 56 and C-Face Footless (Frame 140-210TC)
Models with Prefix DB, NB, RB, SB, XB**

HP	Full Load RPM	Frame	Full Load Amps @ 230V	Locked Rotor Amps @ 230V	EFFICIENCY			POWER FACTOR			F.L. Ft. Lbs.	Locked Rotor %	Break-Down %
					Full Load	3/4 Load	1/2 Load	Full Load	3/4 Load	1/2 Load			
.33	1730	56C	1.36	7.2	70.0	66.0	61.0	65.0	55.0	44.0	1.01	220	300
	3460	56C	1.50	11.4	73.0	69.7	62.8	85.5	79.8	70.0	1.52	250	350
.50	1730	56C	1.70	11.5	80.0	79.8	75.0	69.0	59.0	46.0	1.50	270	360
	1170	56C	2.00	8.20	74.0	73.5	68.4	65.4	56.0	43.0	2.32	170	250
.75	3460	56C	2.20	18.0	74.0	72.8	66.6	85.0	78.4	68.0	1.12	250	350
	1730	56C	2.20	14.0	81.5	80.9	77.9	78.7	71.0	59.1	2.26	230	320
1	1170	56C	3.20	13.0	74.0	71.4	66.0	58.0	51.0	40.0	3.47	200	280
	3445	56C	3.10	19.0	71.0	67.5	60.0	83.0	77.0	66.0	1.51	240	250
1.5	1720	56C	3.30	21.0	79.0	77.4	73.5	72.9	63.0	49.0	3.00	250	330
	1720	143TC	3.00	25.0	82.5	82.0	79.5	75.4	66.6	53.5	3.00	250	380
2	3460	56C	4.30	28.0	74.0	72.0	66.0	88.0	83.4	73.3	2.27	220	280
	1720	56C	4.50	28.5	80.5	79.5	73.7	78.0	69.0	54.0	4.52	250	300
3	1720	145TC	4.50	35.0	84.0	83.0	79.0	76.6	69.0	54.0	4.51	280	350
	3460	56C	5.80	43.1	78.0	76.0	70.0	82.0	76.4	65.0	3.02	220	320
5	1735	56C	6.00	45.0	82.0	80.5	78.0	77.0	68.0	54.0	6.10	250	330
	1735	145TC	5.60	40.5	84.0	83.8	83.5	85.6	77.9	64.0	6.10	200	300
7.5	1745	182TC	8.00	62.0	87.5	86.8	84.0	81.3	74.5	63.5	8.97	220	300
10	1745	184TC	13.4	111	87.5	87.2	85.0	80.4	74.0	62.5	14.94	250	350
15	1725	213TC	19.6	134	89.5	89.5	88.5	79.9	73.7	62.0	22.26	200	300
20	1735	215TC	25.8	190	89.5	89.6	89.0	81.0	74.9	63.6	29.86	200	300

Models with Prefix NH, DH, OR XH

HP	Full Load RPM	Frame	Full Load Amps @ 230V	Locked Rotor Amps @ 230V	EFFICIENCY			POWER FACTOR			F.L. Ft. Lbs.	Locked Rotor %	Break-Down %
					Full Load	3/4 Load	1/2 Load	Full Load	3/4 Load	1/2 Load			
1	1800	143T/TC	3.0	23.2	85.5	84.0	80.1	76.2	67.6	54.0	3.00	250	360
	3600	143T/TC	3.8	33.9	84.0	83.5	80.0	90.2	86.0	79.0	2.25	280	350
1.5	1200	145T/TC	5.0	28.0	87.5	86.4	83.0	67.0	58.0	47.0	6.80	150	250
	1800	145T/TC	4.2	33.5	86.5	86.1	83.0	81.0	73.4	60.5	4.51	230	340
2	3600	145T/TC	5.0	50.0	85.5	84.5	80.5	84.7	77.0	66.0	6.00	250	350
	1800	145T/TC	5.2	43.1	86.5	86.3	84.5	82.5	76.0	62.8	6.00	200	320
3	1200	184T/TC	6.2	31.6	88.5	87.1	86.5	73.7	66.4	54.7	8.97	165	250
	3600	182T/TC	7.4	72.0	86.5	86.3	84.2	88.5	84.0	75.5	4.47	250	350
5	1800	182T/TC	7.8	62.0	89.5	87.5	85.5	81.3	74.5	63.5	8.97	220	300
	1200	213T/TC	9.2	42.0	88.5	88.6	86.8	69.0	63.0	51.0	13.4	160	200
7.5	3600	184T/TC	11.6	101	88.5	87.9	86.5	92.4	87.8	82.8	7.46	220	320
	1800	184T/TC	13.2	104	89.5	89.0	85.8	80.4	74.0	62.5	14.9	250	350
10	3600	213T/TC	17.2	142	89.5	89.0	87.2	92.1	92.0	88.7	11.2	200	300
	1800	213T/TC	18.0	125	91.7	91.2	90.3	86.0	82.5	74.5	22.3	180	250
15	3600	215T/TC	22.4	196	90.2	90.0	89.0	93.5	92.0	89.0	14.9	200	320
	1800	215T/TC	24.4	176	91.7	91.3	90.0	84.8	79.4	70.5	29.7	180	280

**NEMA Premium Efficient – TEFC Enclosure
Models with Prefix EH or TH**

HP	Full Load RPM	Frame	Full Load Amps @ 230V	Locked Rotor Amps @ 230V	EFFICIENCY			POWER FACTOR			F.L. Ft. Lbs.	Locked Rotor %	Break-Down %
					Full Load	3/4 Load	1/2 Load	Full Load	3/4 Load	1/2 Load			
7.5	1170	254T	20.2	127	91.7	92.0	91.5	77.0	72.0	61.5	33.6	200	240
10	1170	256T	26.4	162	91.7	92.1	91.7	79.0	74.5	65.0	44.9	200	240
15	3510	254T/TC	34.8	226	91.0	91.2	90.9	89.0	91.8	88.1	22.1	185	275
	1760	254T/TC	35.8	222	93.0	92.3	91.8	84.0	87.1	80.5	44.4	205	260
	1170	284T/TC	38.8	232	92.4	92.6	91.3	80.0	75.5	66.3	67.3	210	230
20	3510	256T/TC	46.4	280	91.0	91.3	91.2	89.0	92.5	89.5	29.5	180	250
	1760	256T/TC	47.4	288	93.0	92.6	92.2	85.0	87.8	81.8	59.2	210	250
	1170	286T/TC	51.0	290	92.4	92.8	91.5	81.0	78.0	70.0	89.8	210	225
25	3520	284TS	56.8	336	91.7	92.0	91.8	90.0	93.2	91.3	36.8	165	225
	1765	284T	57.6	334	93.6	93.2	92.8	87.0	88.3	82.9	73.9	185	245
	1175	324T	60.4	365	93.0	93.1	92.2	85.0	81.0	71.0	111.8	210	250
30	3525	286TS	68.2	402	91.7	92.3	92.2	90.0	93.1	91.3	44.2	170	220
	1765	286T	69.0	388	94.1	93.4	93.1	87.0	89.0	84.3	88.7	180	230
	1175	326T	72.0	435	93.0	93.3	92.5	85.5	81.5	72.0	134.1	215	255
40	3530	324TS	90.2	488	92.4	92.1	91.6	90.0	90.9	86.9	58.8	155	265
	1770	324T	90.6	542	94.1	93.7	93.3	88.0	86.0	79.3	118.0	170	250
	1180	364T	96.0	580	94.5	94.7	93.7	84.0	82.0	75.0	178.1	200	220
50	3550	326TS	112.0	598	93.0	92.8	92.4	90.0	91.4	87.9	73.5	155	255
	1770	326T	112.6	680	94.5	94.0	93.7	88.0	87.2	80.1	147.5	175	250
	1180	365T	120.0	725	94.5	94.8	94.3	84.0	83.0	75.5	222.6	200	230
60	3565	364TS	133.4	806	93.6	93.4	93.0	90.0	93.4	91.1	88.1	165	255
	1770	364T	136.0	824	95.0	94.1	93.8	87.0	87.2	81.2	176.5	160	250
	1180	404T	148.0	870	95.0	95.1	94.3	82.0	79.5	72.0	267.1	200	240
75	3565	365TS	166.8	958	93.6	93.8	93.6	90.0	93.2	91.1	110.1	165	240
	1770	365T	169.4	1042	95.4	94.5	94.1	87.0	87.7	81.9	220.6	165	250
	1180	405T	181.0	1085	95.0	95.3	94.5	83.0	80.5	73.0	333.8	200	240
100	3540	405TS	228.0	1450	94.5	94.5	93.4	88.0	87.0	82.5	148.4	160	240
	1775	405T	226.0	1348	95.4	94.8	94.4	87.0	86.2	79.7	294.1	155	250
	1180	444T	242.0	1450	95.0	95.1	94.2	82.5	80.5	73.0	445.1	200	250
125	3550	444TS	290.0	1815	94.5	94.7	93.5	86.5	84.5	77.0	184.9	160	220
	1775	444T	280.0	1656	95.4	95.0	94.7	88.0	89.5	85.0	367.2	165	240

**CONNECTION INFORMATION OF STERLING 3-PHASE T-FRAME MOTORS
E, T SERIES**

TEFC

HP	3600-RPM						1800-RPM						1200-RPM														
	ACROSS THE LINE START		Y-Δ START		PART WINDING START		NUMBER OF LEADS	ACROSS THE LINE START		Y-Δ START		PART WINDING START		NUMBER OF LEADS	ACROSS THE LINE START		Y-Δ START		PART WINDING START								
	LOW V	HIGH V	LOW V	HIGH V	LOW V	HIGH V		LOW V	HIGH V	LOW V	HIGH V	LOW V	HIGH V		LOW V	HIGH V	LOW V	HIGH V	LOW V	HIGH V	LOW V	HIGH V					
7.5 - 125	#3	#4	#6	#7	N/A	N/A	12	#3	#4	#6	#7	#5	N/A	12	#3	#4	#6	#7	#5	N/A	12	#3	#4	#6	#7	#5	N/A

NOTE: FOR SINGLE VOLTAGE 575V UNITS WITH 6-LEADS, REFER TO CONNECTION #10.

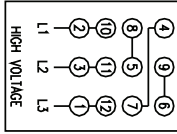
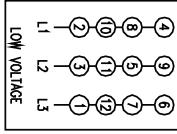
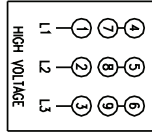
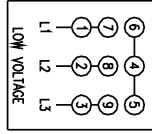
**CONNECTION INFORMATION OF STERLING 3-PHASE T-FRAME MOTORS
R, S, N, D AND X SERIES (TENV AND TEFC)**

HP	3600-RPM						1800-RPM						1200-RPM														
	ACROSS THE LINE START		Y-Δ START		PART WINDING START		NUMBER OF LEADS	ACROSS THE LINE START		Y-Δ START		PART WINDING START		NUMBER OF LEADS	ACROSS THE LINE START		Y-Δ START		PART WINDING START								
	LOW V	HIGH V	LOW V	HIGH V	LOW V	HIGH V		LOW V	HIGH V	LOW V	HIGH V	LOW V	HIGH V		LOW V	HIGH V	LOW V	HIGH V	LOW V	HIGH V	LOW V	HIGH V					
0.33 - 0.75	#1	#2	N/A	N/A	N/A	N/A	9	#1	#2	N/A	N/A	N/A	N/A	9	#1	#2	N/A	N/A	N/A	N/A	9	#1	#2	N/A	N/A	N/A	N/A
1 - 5	#1	#2	N/A	N/A	N/A	N/A	9	#1	#2	N/A	N/A	N/A	N/A	9	#1	#2	N/A	N/A	N/A	N/A	9	#1	#2	N/A	N/A	N/A	N/A
7.5 - 10	#1	#2	N/A	N/A	N/A	N/A	9	#1	#2	N/A	N/A	N/A	N/A	9	#1	#2	N/A	N/A	N/A	N/A	9	#1	#2	N/A	N/A	N/A	N/A

**CONNECTION INFORMATION OF STERLING 1-PHASE T-FRAME MOTORS
S, N, D AND X SERIES (TENV AND TEFC)**

HP	ALL SPEEDS		
	NUMBER OF LEADS	ACROSS THE LINE START	
		LOW V	HIGH V
0.25 - 1.5	6	#12	#13
0.25 - 1.5	7	#14	#15

CONNECTION DIAGRAMS



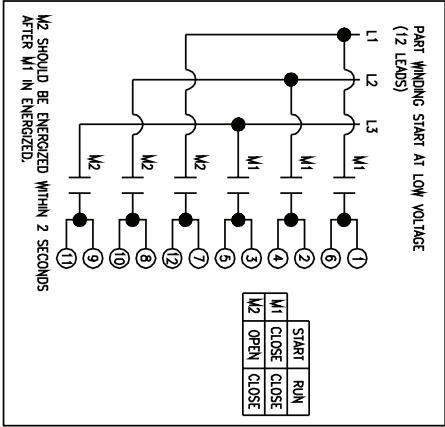
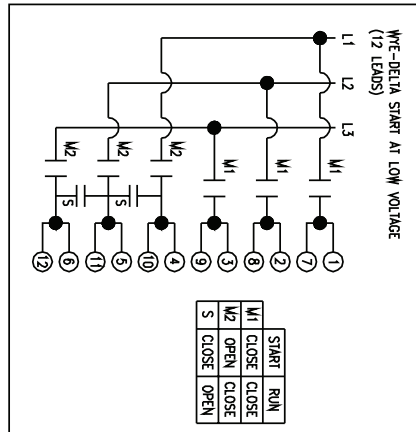
#3

#4

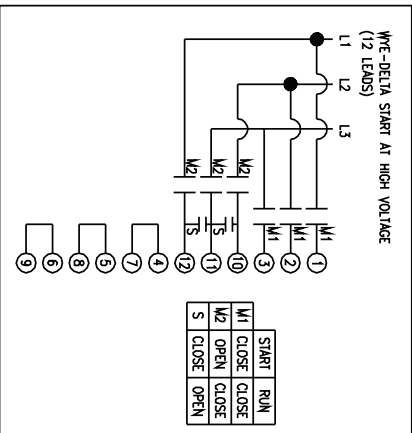
#1

#2

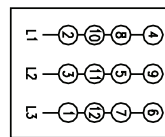
#6



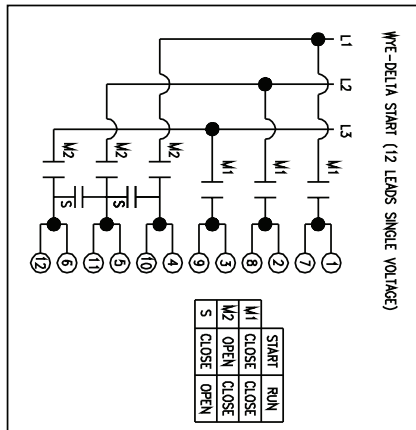
#5



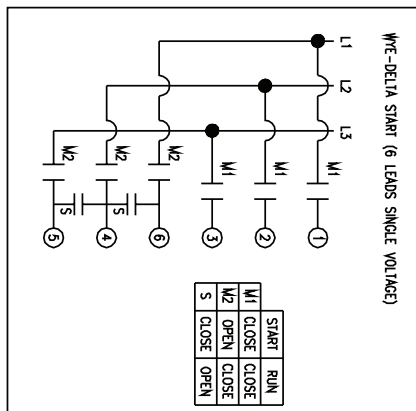
#7



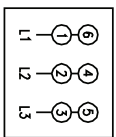
#8



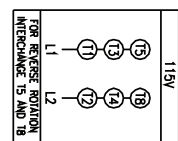
#9



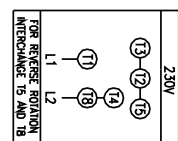
#11



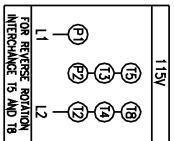
#10



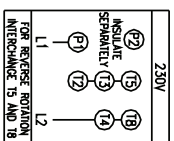
#12



#13



#14



#15

Bearing Sizes

FRAME	T-SERIES 7	T-SERIES 8	E-SERIES 7	E-SERIES 8	N,R-SERIES 7	N,R-SERIES 8	S,X,D-SERIES 7	S,X,D-SERIES 8
56					6205ZZ*	6204ZZ	6205LL	6204LL
140T	6205LL	6205LL	6205ZZ	6205ZZ			6205LL	6204LL
180T	6206LL	6206LL	6207ZZ	6206ZZ			6306LL	6206LL**
210T	6208LL	6208LL	6308ZZ	6208ZZ			6308LL	6306LL
250T	6309LL	6309LL	6310ZZ	6208ZZ			6309LL	6309LL
280T	6311CLL	6311CLL	6310ZZ	6210ZZ			6311LL	6311LL
280TS	6311C3LL	6311C3LL	6310C3	6210C3			6311C3LL	6311C3LL
320T	6312C3	6312C3	6312ZZ	6212ZZ				
320TS	6312C3	6312C3	6312C3	6212C3				
360T	6314	6314	NU215	6312				
360TS	6314C3	6314C3	6312C3	6312C3				
400T	6316	6316	NU218	6313				
400TS	6316C3	6316C3	6313C3	6313C3				
440T	NU316	6316	NU220	6315				
440TS	6316C3	6316C3	6313C3	6313C3				

Inverter Rated Motors

In many instances, Sterling Electric's Premium Efficient NEMA design "B" motor is suitable for applications using solid state, variable frequency, variable voltage controllers (Inverters). To properly select a motor and the proper controller for an application, requires several pieces of information.

Type of Load:	Variable torque, constant torque, constant horsepower
Speed Variation Required:	High speed/low speed
Starting Torque Required:	Applications requiring NEMA design "C" high starting torque may need a special motor and controller design
Duty Cycle:	Hours per day, number of starts and stops, run time at low speeds
Over Hauling Loads:	Can the motor be driven (by the load) above synchronous speed, or in reverse direction ?
Coupling Method:	Direct coupled, sprocket, sheave, pinion/gear

Most variable torque applications with speed ranges of 10:1 (60Hz – 6 Hz), constant torque applications with speed ranges of 7:1 (60Hz – 8.5 Hz) or less, both with inverters that do not produce excessive peak voltages can be serviced by a Premium Efficient Sterling motor --- open dripproof or totally enclosed fan cooled enclosure --- depending upon the location and environment.

Use of standard motors on variable frequency, variable voltage controllers should be limited as follows:

1. Maximum total line distance between the controller and motor is not to exceed 50 Feet.
2. Maximum switching (carrier) frequency of the control is not to exceed 8 kHz.

3600 – RPM motors operating at lower frequencies can become unstable, noisy, and produce "cogging".

Small motors, such as the above will require varying degrees of voltage "boost" or "forcing" in order to produce rated torque at low frequency operation. Refer to NEMA MG1-Part 31.

Note: The use of standard Sterling motors on high switching frequency, IGBT type inverters may void the warranty relating to winding and possible bearing failures. Inverter duty motors are recommended on Pages 12, 19 and 23 of this Catalog.

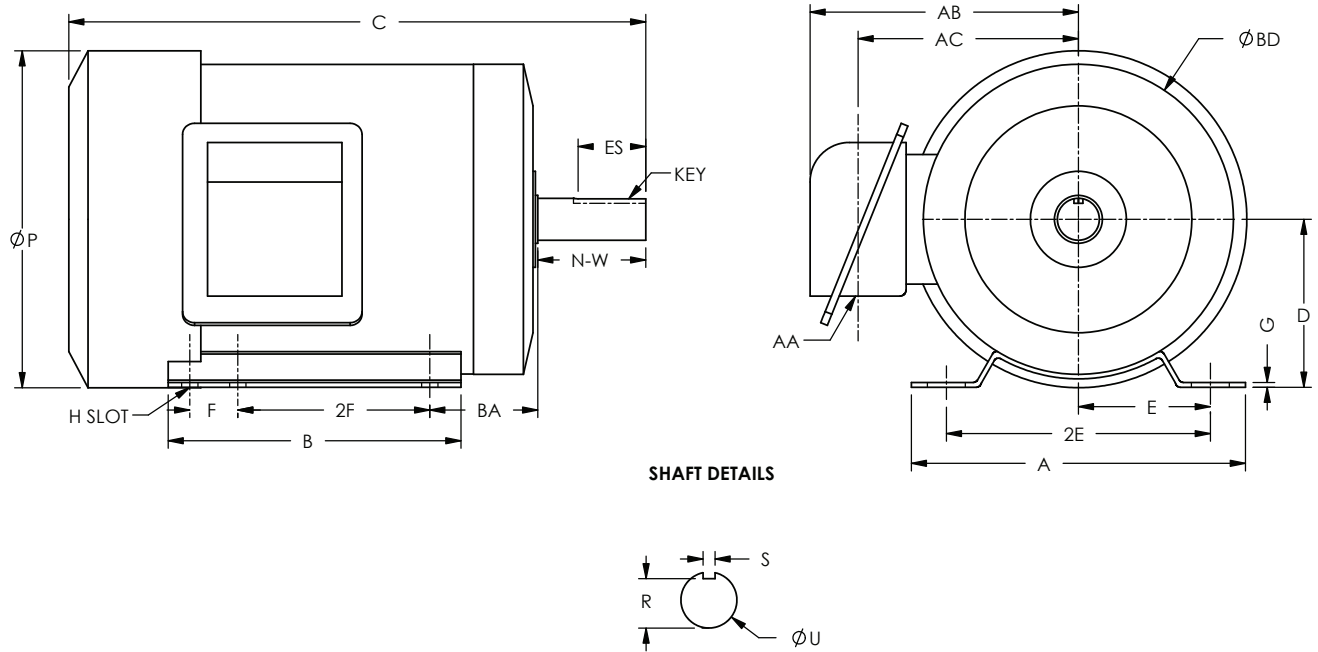
DANGER: The maximum allowable speed for these motors is not to exceed the values shown in the table listed below. Operating the motors beyond this speed can cause severe damage to both equipment and personnel. Consult factory for applications that require motor speeds beyond the values listed in the table or larger frame sizes.

Sterling Rolled Steel frame, Cast Iron frame and Stainless Steel frame motors (Model Prefixes NB, DB, SB, XB, DH or XH and TH) can withstand dielectric stresses of 1600 volts, peak voltage terminal to terminal with maximum .5 V/ns dv/dt* rate of rise with no noticeable adverse effect on the insulation system life.

For application Questions or Assistance Consult Factory

NH/DH TEFC ROLLED STEEL FOOTED MOTORS (56-215T)

STERLING
ELECTRIC, INC.



SHAFT DETAILS

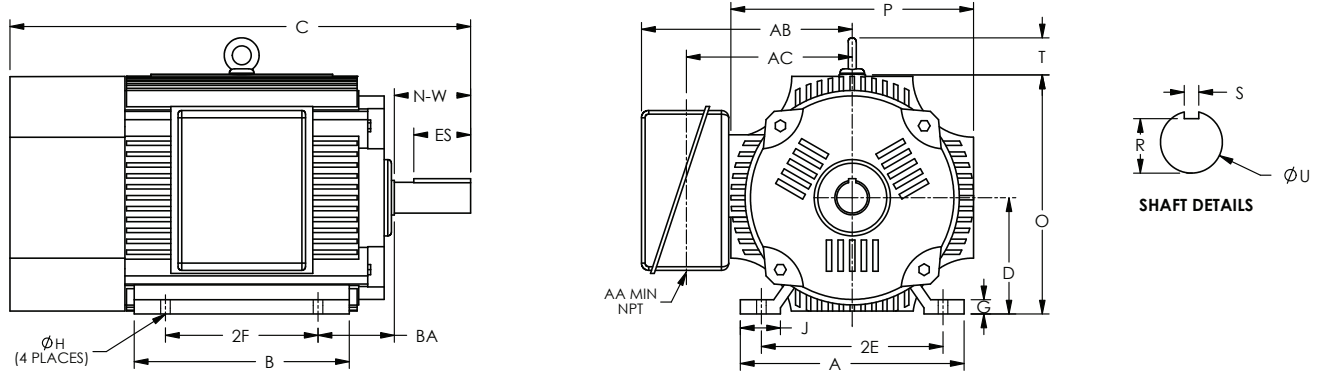
FRAME	A	B	C	D	E	2E	F*	2F	G	H	N-W	P	R	S	U
56	6.50	5.75	12.95	3.50	2.44	4.88	2.00	3.00	.10	.79 x .34	1.88	7.02	.517	.188	0.625
145T	6.96	6.10	13.60	3.50	2.75	5.50	1.00	4.00	.10	.79 x .34	2.25	7.02	.771	.188	0.875
182T	8.82	6.50	15.59	4.50	3.75	7.50	1.00	4.50	.15	.71 x .47	2.75	8.45	0.986	.250	1.125
184T	8.82	6.50	16.37	4.50	3.75	7.50	1.00	4.50	.15	.71 x .47	2.75	8.45	0.986	.250	1.125
213T	10.32	7.32	17.92	5.25	4.25	8.50	-	5.50	.20	.71 x .47	3.38	10.77	1.201	.31	1.375
215T	10.32	7.32	19.10	5.25	4.25	8.50	1.50	5.50	.20	.71 x .47	3.38	10.77	1.201	.31	1.375

*Alternate mounting on same base.

** All motors shown at longest frame length.

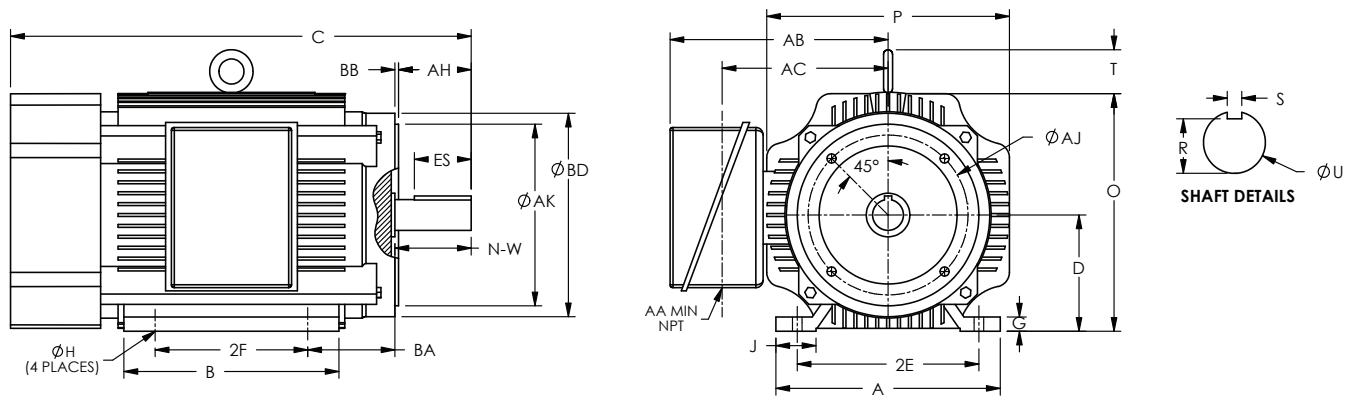
FRAME	AA	AB	AC	BA	BD	ES
56	0.87	5.55	4.25	2.75	6.46	1.41
145T	0.87	5.59	4.25	2.25	6.46	1.41
145T	0.87	5.59	4.25	2.25	6.46	1.41
182T	1.10	6.50	5.17	2.75	7.67	1.78
184T	1.10	6.50	5.17	2.75	7.67	1.78
213T	1.10	7.68	6.38	3.50	10.07	2.41
215T	1.10	7.68	6.38	3.50	10.07	2.41

Dimensions subject to change without notice. Refer to factory for Certified drawing.



Motor Mounting Dimensions

FRAME	E	F	H	BA	A	B	C	D	G	J	O	P	R	S	T	AA	AB	AC	N-W	U	D.E. BRG	O.D.E. BRG
254T	5.0	4.125	0.53	4.25	12.2	10.1	23.5	6.25	0.83	2.56	13.0	13.6	1.416	.375	2.4	1-1/4	11.0	8.6	4.00	1.625	6309	6309
256T	5.0	5.00	0.53	4.25	12.2	12.8	25.2	6.25	0.83	2.56	13.0	13.6	1.416	.375	2.4	1-1/4	11.0	8.6	4.00	1.625	6309	6309
284T	5.5	4.75	0.53	4.75	13.8	12.3	26.6	7.0	0.94	2.76	14.6	15.1	1.591	.500	2.4	1-1/2	13.4	10.0	4.62	1.875	6311	6311
284TS	5.5	4.75	0.53	4.75	13.8	12.3	25.2	7.0	0.94	2.76	14.6	15.1	1.416	.375	2.4	1-1/2	13.4	10.0	3.25	1.625	6311	6311
286T	5.5	5.50	0.53	4.75	13.8	13.8	28.1	7.0	0.94	2.76	14.6	15.1	1.591	.500	2.4	1-1/2	13.4	10.0	4.62	1.875	6311	6311
286TS	5.5	5.50	0.53	4.75	13.8	13.8	26.7	7.0	0.94	2.76	14.6	15.1	1.416	.375	2.4	1-1/2	13.4	10.0	3.25	1.625	6311	6311
324T	6.25	5.25	0.66	5.25	15.4	14.8	31.7	8.0	0.98	2.76	16.4	16.7	1.845	.500	2.5	2	15.0	10.9	5.25	2.125	6312	6312
324TS	6.25	5.25	0.66	5.25	15.4	14.8	30.2	8.0	0.98	2.76	16.4	16.7	1.591	.500	2.5	2	15.0	10.9	3.75	1.875	6312	6312
326T	6.25	6.00	0.66	5.25	15.4	16.3	33.3	8.0	0.98	2.76	16.4	16.7	1.845	.500	2.5	2	15.0	10.9	5.25	2.125	6312	6312
326TS	6.25	6.00	0.66	5.25	15.4	16.3	31.7	8.0	0.98	2.76	16.4	16.7	1.591	.500	2.5	2	15.0	10.9	3.75	1.875	6312	6312
364T	7.0	5.625	0.66	5.88	17.1	15.0	33.7	9.0	0.94	3.11	18.3	18.1	2.021	.625	2.5	3	17.5	12.9	5.88	2.375	6314	6314
364TS	7.0	5.625	0.66	5.88	17.1	15.0	31.5	9.0	0.94	3.11	18.3	18.1	1.591	.500	2.5	3	17.5	12.9	3.75	1.875	6314	6314
365T	7.0	6.125	0.66	5.88	17.1	17.4	37.1	9.0	0.94	3.11	18.3	18.1	2.021	.625	2.5	3	17.5	12.9	5.88	2.375	6314	6314
365TS	7.0	6.125	0.66	5.88	17.1	16.2	34.9	9.0	0.94	3.11	18.3	18.1	1.591	.500	2.5	3	17.5	12.9	3.75	1.875	6314	6314
404T	8.0	6.125	0.81	6.62	20.0	19.0	38.0	10.0	1.18	3.15	20.1	20.3	2.45	.750	2.5	3	18.8	12.2	7.25	2.875	6316	6316
404TS	8.0	6.125	0.81	6.62	20.0	19.0	38.0	10.0	1.18	3.15	20.1	20.3	1.845	.500	2.5	3	18.8	12.2	4.25	2.125	6316	6316
405T	8.0	6.875	0.81	6.62	20.0	19.0	38.0	10.0	1.18	3.15	20.1	20.3	2.45	.750	2.5	3	18.8	12.2	7.25	2.875	6316	6316
405TS	8.0	6.125	0.81	6.62	20.0	19.0	38.0	10.0	1.18	3.15	20.1	20.3	1.845	.500	2.5	3	18.8	12.2	4.25	2.125	6316	6316
444T	9.0	7.25	0.81	7.5	21.7	20.0	45.1	11.0	1.38	3.46	22.5	23.1	2.88	.875	3.7	3	19.7	14.8	8.50	3.375	NU318	NU318
444TS	9.0	8.25	0.81	7.5	21.7	20.0	41.4	11.0	1.38	3.46	22.5	23.1	2.021	.625	3.7	3	19.7	14.8	4.75	2.375	6316	6316
445T	9.0	8.25	0.81	7.5	21.7	20.0	45.1	11.0	1.38	3.46	22.5	23.1	2.88	.875	3.7	3	19.7	14.8	8.50	3.375	NU318	NU318
445TS	9.0	8.25	0.81	7.5	21.7	20.0	41.4	11.0	1.38	3.46	22.5	23.1	2.021	.625	3.7	3	19.7	14.8	4.75	2.375	6316	6316
447T	9.0	10.0	0.81	7.5	21.7	28.0	53.6	11.0	1.38	3.46	22.5	23.1	2.88	.875	3.7	3	19.7	14.8	8.50	3.375	NU320	NU320
447TS	9.0	12.5	0.81	7.5	21.7	28.0	50.0	11.0	1.38	3.46	22.5	23.1	2.021	.625	3.7	3	19.7	14.8	4.75	2.375	6316	6316
449T	9.0	12.5	0.81	7.5	21.7	28.0	53.6	11.0	1.38	3.46	22.5	23.1	2.88	.875	3.7	3	19.7	14.8	8.50	3.375	NU320	NU320
449TS	9.0	12.5	0.81	7.5	21.7	28.0	50.0	11.0	1.38	3.46	22.5	23.1	2.021	.625	3.7	3	19.7	14.8	4.75	2.375	6316	6316



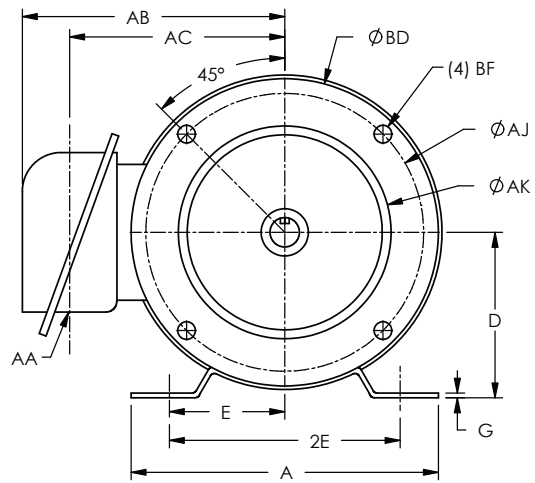
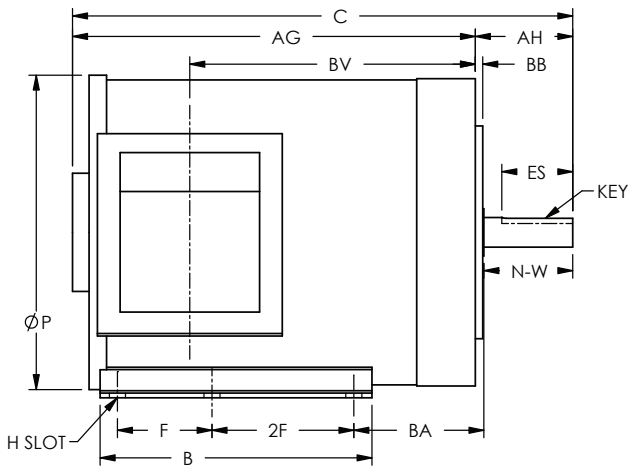
Motor C-Face Mounting Dimensions

FRAME	AJ	AK	BA	BB MIN	BD MAX	# OF TAPS	THREAD	DEPTH OF TAP	U	AH	R	ES	S
254TC.256TC	7.25	8.50	4.25	.25	9.00	4	1/2-13	0.75	1.625	3.75	1.416	2.91	0.375
284TC.286TC	9.00	10.50	4.75	.25	11.25	4	1/2-13	0.75	1.875	4.38	1.591	3.28	0.500
284TSC.286TSC	9.00	10.50	4.75	.25	11.25	4	1/2-13	0.75	1.625	3.00	1.416	1.91	0.375
324TC.326TC	11.00	12.50	5.25	.25	14.00	4	5/8-11	0.94	2.125	5.00	1.845	3.91	0.500
324TSC.326TSC	11.00	12.50	5.25	.25	14.00	4	5/8-11	0.94	1.875	3.50	1.591	2.03	0.500
364TC.365TC	11.00	12.50	5.88	.25	14.00	8	5/8-11	0.94	2.375	5.62	2.021	4.28	0.625
364TSC.365TSC	11.00	12.50	5.88	.25	14.00	8	5/8-11	0.94	1.875	3.50	1.591	2.03	0.500
404TC.405TC	11.00	12.50	6.62	.25	15.50	8	5/8-11	0.94	2.875	7.00	2.45	5.65	0.750
404TSC.405TSC	11.00	12.50	6.62	.25	15.50	8	5/8-11	0.94	2.125	4.00	1.845	2.78	0.500
444TC.445TC	14.00	16.00	7.50	.25	18.00	8	5/8-11	0.94	3.375	8.25	2.88	6.91	0.875
444TSC.445TSC	14.00	16.00	7.50	.25	18.00	8	5/8-11	0.94	2.375	4.50	2.021	3.03	0.625
447TC.449TC	14.00	16.00	7.50	.25	18.00	8	5/8-11	0.94	3.375	8.25	2.88	6.91	0.875
447TSC.449TSC	14.00	16.00	7.50	.25	18.00	8	5/8-11	0.94	2.375	4.50	2.021	3.03	0.625

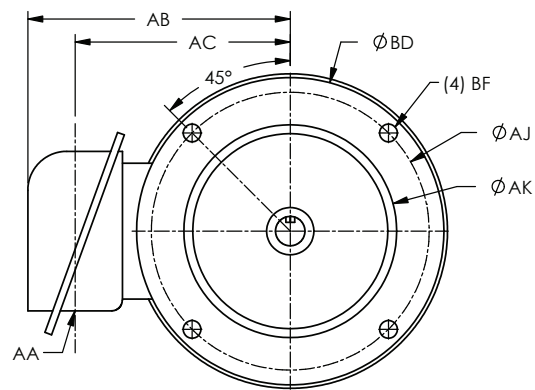
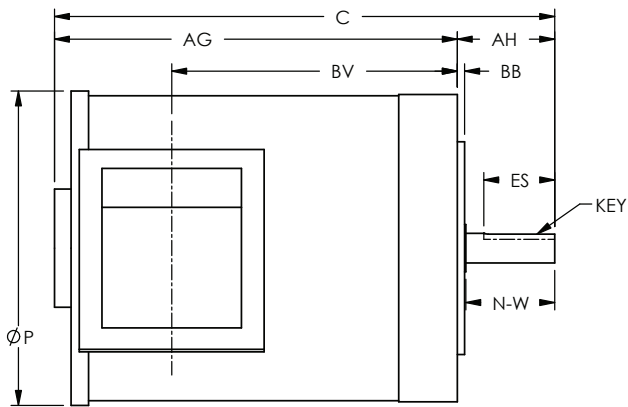
C-FACE TENV ROLLED STEEL MOTORS

STERLING
ELECTRIC, INC.

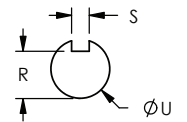
FOOTED



FOOTLESS



SHAFT DETAILS



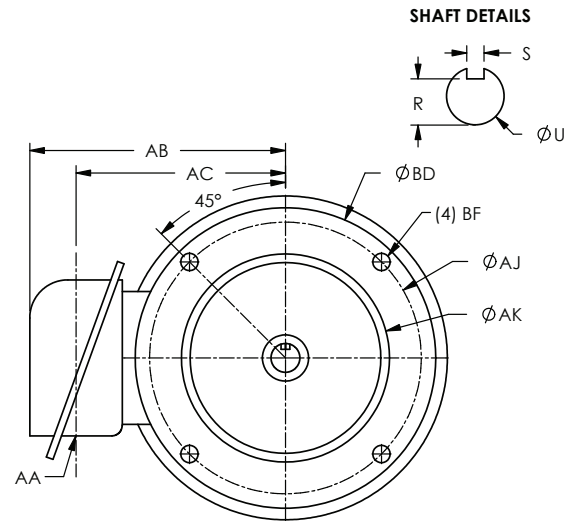
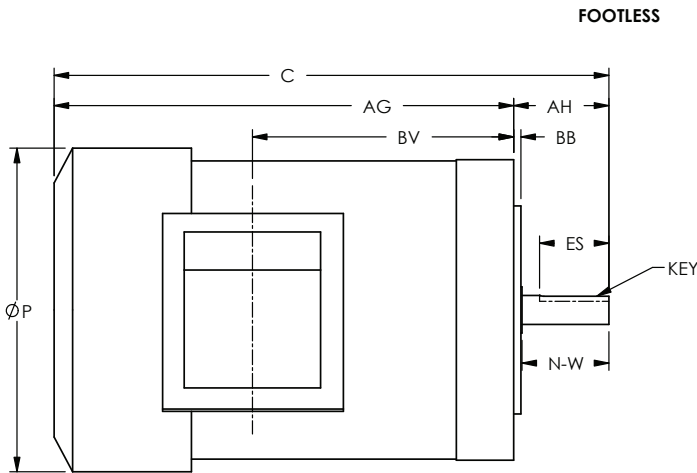
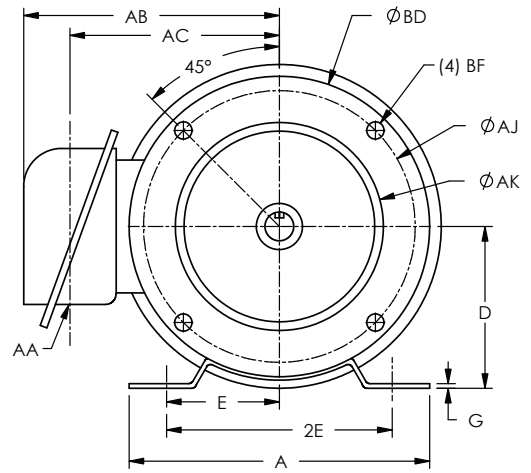
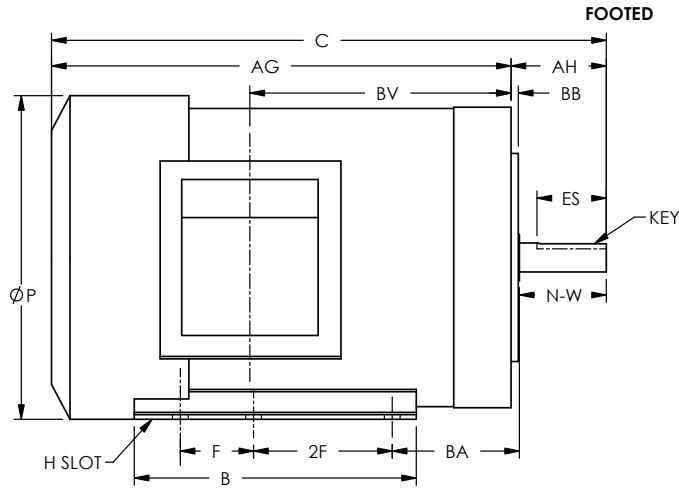
HP	RPM	FRAME	A	B	C	D	E	2E	F*	2F	G	H	N-W	P	R	S	U
0.50	2/4	56C	6.50	3.75	9.60	3.50	2.44	4.88	-	3.00	.10	.79 x .34	1.88	6.50	.517	.188	.625
0.75	2/4	56C	6.50	3.75 5.75	9.60 10.19	3.50	2.44	4.88	- 2.00	3.00	.10	.79 x .34	1.88	6.50	.517	.188	.625

*Alternate mounting on same base.

HP	RPM	FRAME	AA	AB	AC	AG	AH	AJ	AK	BA	BB	BD	BF	BV	ES
0.50	2/4	56C	.87	5.53	4.25	7.54	2.06	5.88	4.50	2.75	.16	6.50	3/8-16	5.06	1.41
0.75	2/4	56C	.87	5.53	4.25	7.54 8.13	2.06	5.88	4.50	2.75	.16	6.50	3/8-16	5.06 5.65	1.41

Dimensions subject to change without notice. Refer to factory for Certified drawing.

C-FACE TEFC ROLLED STEEL MOTORS (56C-140TC)



HP	RPM	FRAME	A	B	C	D	E	2E	F*	2F	G	H	N-W	P	R	S	U
1.0	2/4	56C	6.50	3.74 5.75	11.37 11.96	3.50	2.44	4.88	2.00	3.00	.10	.79 x .34	1.88	7.02	.517	.188	.625
	2/4	143TC	6.96	6.10	12.02	3.50	2.75	5.50	1.00	4.00	.10	.79 x .34	2.25	7.02	.771	.188	.875
1.5	2/4	56C	6.50	5.75	12.36	3.50	2.44	4.88	2.00	3.00	.10	.79 x .34	1.88	7.02	.517	.188	.625
	2/4	145TC	6.96	6.10	12.42 13.01	3.50	2.75	5.50	1.00	4.00	.10	.79 x .34	2.25	7.02	.771	.188	.875
2.0	2/4	56C	6.50	5.75	12.95	3.50	2.44	4.88	2.00	3.00	.10	.79 x .34	1.88	7.02	.517	.188	.625
	2/4	145TC	6.96	6.10	13.01 13.60	3.50	2.75	5.50	1.00	4.00	.10	.79 x .34	2.25	7.02	.771	.188	.875

*Alternate mounting on same base.

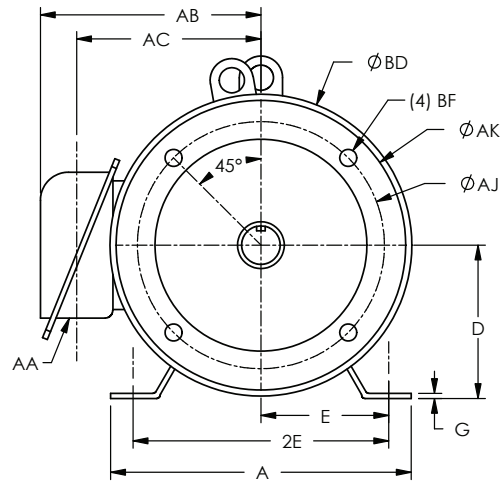
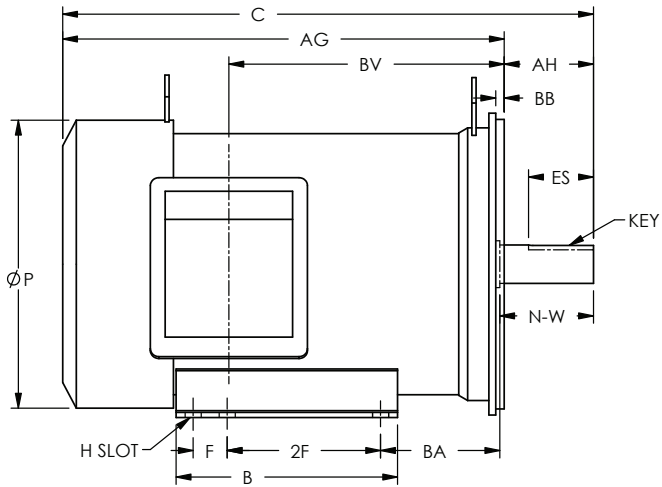
HP	RPM	FRAME	AA	AB	AC	AG	AH	AJ	AK	BA	BB	BD	BF	BV	ES
1.0	2/4	56C	.87	5.55	4.25	9.31 9.9	2.06	5.88	4.50	2.75	.16	6.50	3/8-16	5.06 5.65	1.41
	2/4	143TC	.87	5.55	4.25	9.90	2.12	5.88	4.50	2.75	.16	6.50	3/8-16	5.65	1.41
1.5	2/4	56C	.87	5.55	4.25	10.30	2.06	5.88	4.50	2.75	.16	6.50	3/8-16	6.05	1.41
	2/4	145TC	.87	5.55	4.25	10.30	2.12	5.88	4.50	2.75	.16	6.50	3/8-16	6.05	1.41
2.0	2/4	56C	.87	5.55	4.25	10.89	2.06	5.88	4.50	2.75	.16	6.50	3/8-16	6.64	1.41
	2/4	145TC	.87	5.55	4.25	10.89	2.12	5.88	4.50	2.75	.16	6.50	3/8-16	6.64	1.41

Dimensions subject to change without notice. Refer to factory for Certified drawing.

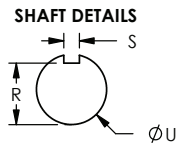
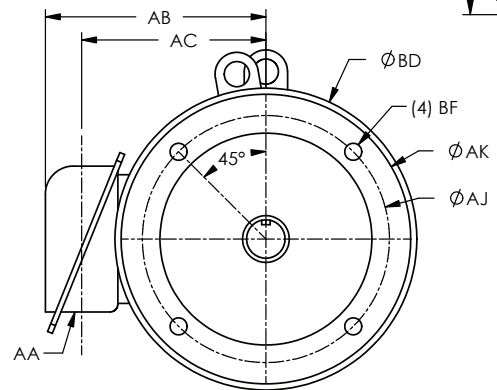
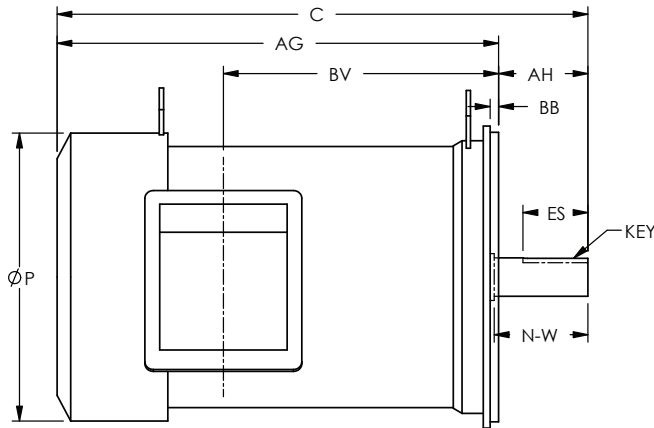
C-FACE TEFC ROLLED STEEL MOTORS (180TC-215TC)

STERLING
ELECTRIC, INC.

FOOTED



FOOTLESS



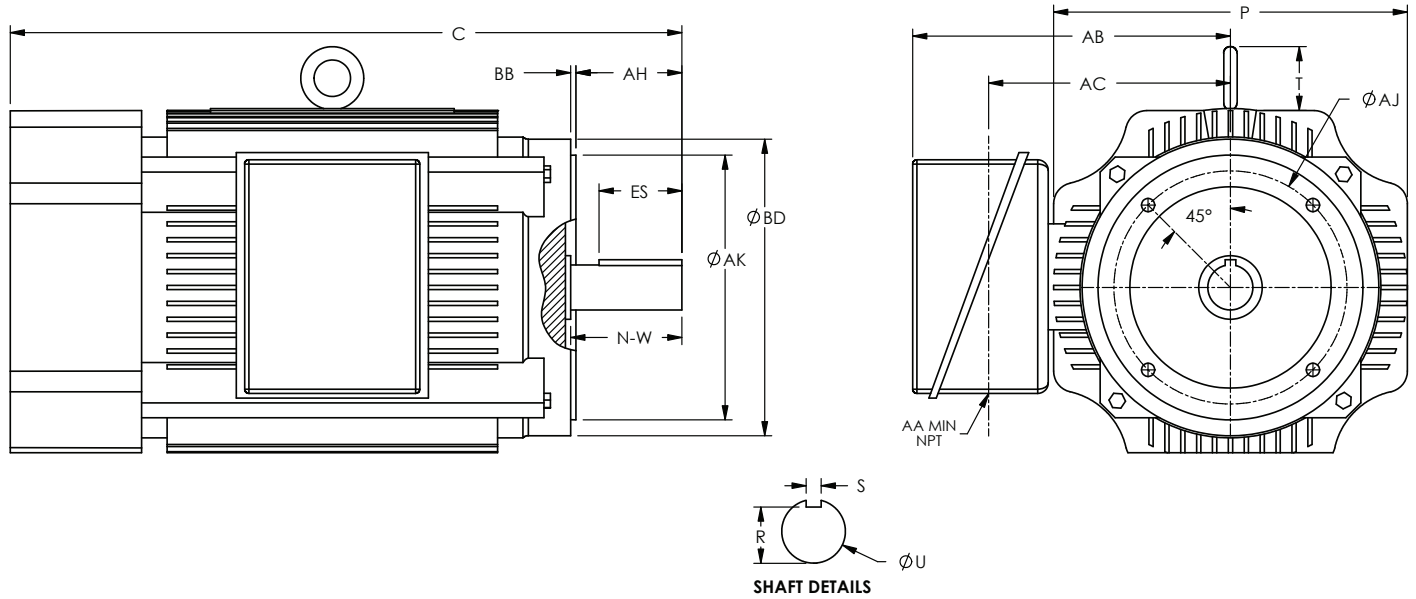
FRAME	A	B	C	D	E	2E	F*	2F	G	H	N-W	P	R	S	U
182TC	8.82	6.50	15.59	4.50	3.75	7.50	1.00	4.50	.15	.71 x .47	2.75	8.45	0.986	.250	1.125
184TC	8.82	6.50	16.37	4.50	3.75	7.50	1.00	4.50	.15	.71 x .47	2.75	8.45	0.986	.250	1.125
213TC	10.32	7.32	17.92	5.25	4.25	8.50	-	5.50	.20	.71 x .47	3.38	10.77	1.201	.31	1.375
215TC	10.32	9.30	19.10	5.25	4.25	8.50	1.50	5.50	.20	.71 x .47	3.38	10.77	1.201	.31	1.375

*Alternate mounting on same base.

** All motors shown at longest frame length

FRAME	AA	AB	AC	AG	AH	AJ	AK	BA	BB	BD	BF	BV	ES
182TC	1.10	6.50	5.17	12.97	2.62	7.25	8.50	3.50	.25	8.86	1/2-13	8.08	1.78
184TC	1.10	6.50	5.17	13.75	2.62	7.25	8.50	3.50	.25	8.86	1/2-13	8.67	1.78
213TC	1.10	7.68	6.38	14.80	3.12	7.25	8.50	4.25	.25	9.00	1/2-13	9.33	2.41
215TC	1.10	7.68	6.38	15.98	3.12	7.25	8.50	4.25	.25	9.00	1/2-13	10.50	2.41

Dimensions subject to change without notice. Refer to factory for Certified drawing.

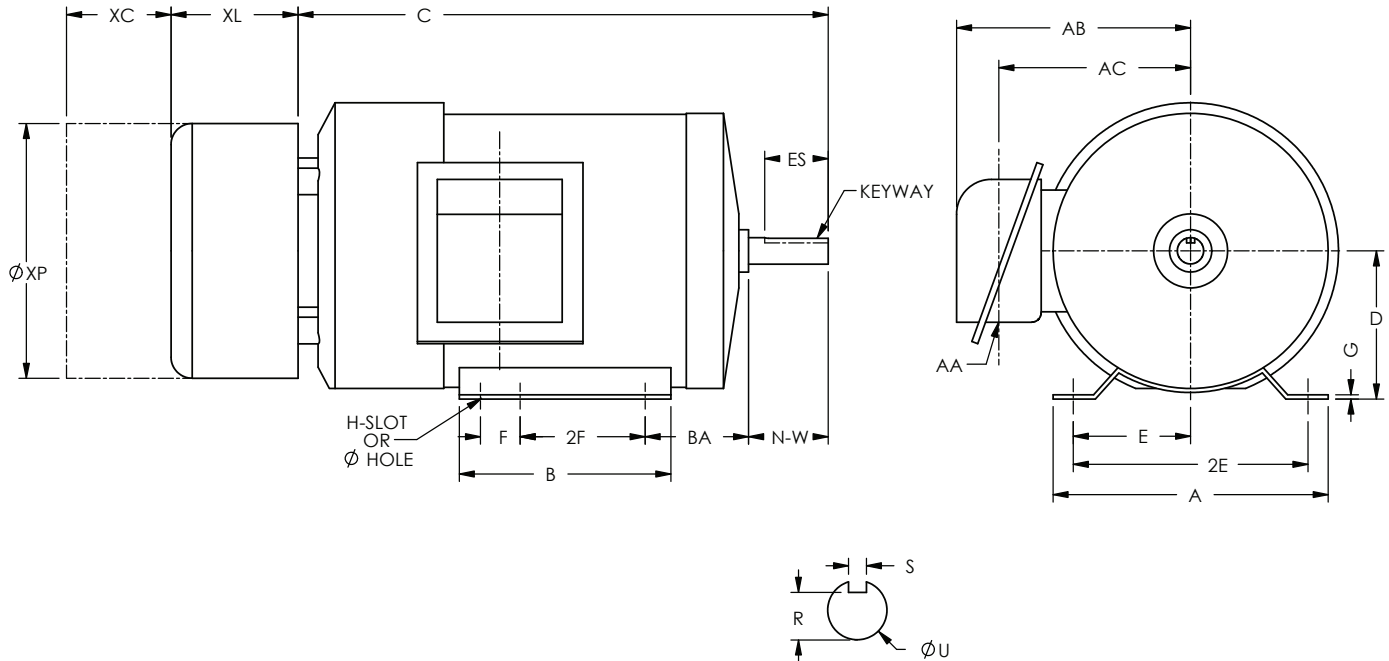


Motor C-Face Mounting Dimensions

FRAME	AJ	AK	BB MIN	BD MAX	# TAPS	THREAD	TAP DEPTH	C	P	U	AH	R	ES	S	T	AA	AB	AC	N-W	D.E. BRG	O.D.E. BRG
254TC	7.25	8.50	0.25	9.00	4	1/2-13	0.75	23.5	13.6	1.625	3.75	1.416	2.91	0.375	2.4	1-1/4	11.0	8.6	4.00	6309	6309
256TC	7.25	8.50	0.25	9.00	4	1/2-13	0.75	25.2	13.6	1.625	3.75	1.416	2.91	0.375	2.4	1-1/4	11.0	8.6	4.00	6309	6309
284TC	9.00	10.50	0.25	11.25	4	1/2-13	0.75	26.6	15.1	1.875	4.38	1.591	3.28	0.500	2.4	1-1/2	13.4	10.0	4.62	6311	6311
284TSC	9.00	10.50	0.25	11.25	4	1/2-13	0.75	25.2	15.1	1.625	3.00	1.416	1.91	0.375	2.4	1-1/2	13.4	10.0	3.25	6311	6311
286TC	9.00	10.50	0.25	11.25	4	1/2-13	0.75	28.1	15.1	1.875	4.38	1.591	3.28	0.500	2.4	1-1/2	13.4	10.0	4.62	6311	6311
286TSC	9.00	10.50	0.25	11.25	4	1/2-13	0.75	26.7	15.1	1.625	3.00	1.416	1.91	0.375	2.4	1-1/2	13.4	10.0	3.25	6311	6311
324TC	11.00	12.50	0.25	14.00	4	5/8-11	0.94	31.7	16.7	2.125	5.00	1.845	3.91	0.500	2.5	2	15.0	10.9	5.25	6312	6312
324TSC	11.00	12.50	0.25	14.00	4	5/8-11	0.94	30.2	16.7	1.875	3.50	1.591	2.03	0.500	2.5	2	15.0	10.9	3.75	6312	6312
326TC	11.00	12.50	0.25	14.00	4	5/8-11	0.94	33.3	16.7	2.125	5.00	1.845	3.91	0.500	2.5	2	15.0	10.9	5.25	6312	6312
326TSC	11.00	12.50	0.25	14.00	4	5/8-11	0.94	31.7	16.7	1.875	3.50	1.591	2.03	0.500	2.5	2	15.0	10.9	3.75	6312	6312
364TC	11.00	12.50	0.25	14.00	8	5/8-11	0.94	33.7	18.1	2.375	5.62	2.021	4.28	0.625	2.5	3	17.5	12.9	5.88	6314	6314
364TSC	11.00	12.50	0.25	14.00	8	5/8-11	0.94	31.5	18.1	1.875	3.50	1.591	2.03	0.500	2.5	3	17.5	12.9	3.75	6314	6314
365TC	11.00	12.50	0.25	14.00	8	5/8-11	0.94	37.1	18.1	2.375	5.62	2.021	4.28	0.625	2.5	3	17.5	12.9	5.88	6314	6314
365TSC	11.00	12.50	0.25	14.00	8	5/8-11	0.94	34.9	18.1	1.875	3.50	1.591	2.03	0.500	2.5	3	17.5	12.9	3.75	6314	6314
404TC	11.00	12.50	0.25	15.50	8	5/8-11	0.94	38.0	20.3	2.875	7.00	2.45	5.65	0.750	2.5	3	18.8	12.2	7.25	6316	6316
404TSC	11.00	12.50	0.25	15.50	8	5/8-11	0.94	38.0	20.3	2.125	4.00	1.845	2.78	0.500	2.5	3	18.8	12.2	4.25	6316	6316
405TC	11.00	12.50	0.25	15.50	8	5/8-11	0.94	38.0	20.3	2.875	7.00	2.45	5.65	0.750	2.5	3	18.8	12.2	7.25	6316	6316
405TSC	11.00	12.50	0.25	15.50	8	5/8-11	0.94	38.0	20.3	2.125	4.00	1.845	2.78	0.500	2.5	3	18.8	12.2	4.25	6316	6316
444TC	14.00	16.00	0.25	18.00	8	5/8-11	0.94	45.1	23.1	3.375	8.25	2.88	6.91	0.875	3.7	3	19.7	14.8	8.50	NU318	NU318
444TSC	14.00	16.00	0.25	18.00	8	5/8-11	0.94	41.4	23.1	2.375	4.50	2.021	3.03	0.625	3.7	3	19.7	14.8	4.75	6316	6316
445TC	14.00	16.00	0.25	18.00	8	5/8-11	0.94	45.1	23.1	3.375	8.25	2.88	6.91	0.875	3.7	3	19.7	14.8	8.50	NU318	NU318
445TSC	14.00	16.00	0.25	18.00	8	5/8-11	0.94	41.4	23.1	2.375	4.50	2.021	3.03	0.625	3.7	3	19.7	14.8	4.75	6316	6316
447TC	14.00	16.00	0.25	18.00	8	5/8-11	0.94	53.6	23.1	3.375	8.25	2.88	6.91	0.875	3.7	3	19.7	14.8	8.50	NU320	NU320
447TSC	14.00	16.00	0.25	18.00	8	5/8-11	0.94	50.0	23.1	2.375	4.50	2.021	3.03	0.625	3.7	3	19.7	14.8	4.75	6316	6316
449TC	14.00	16.00	0.25	18.00	8	5/8-11	0.94	53.6	23.1	3.375	8.25	2.88	6.91	0.875	3.7	3	19.7	14.8	8.50	NU320	NU320
449TSC	14.00	16.00	0.25	18.00	8	5/8-11	0.94	50.0	23.1	2.375	4.50	2.021	3.03	0.625	3.7	3	19.7	14.8	4.75	6316	6316

TEFC FOOTED BRAKE MOTORS 140T-256T

**STERLING
ELECTRIC, INC.**



SHAFT DETAILS

FRAME	A	B	C	D	E	2E	F*	2F	G	H	P	R	S	U	AA	AB	AC	BA	ES	N-W
143T	6.96	6.10	12.82	3.50	2.75	5.50	1.00	4.00	.10	.79 x .34	7.18	0.771	.188	.875	.87	5.55	4.29	2.25	1.41	2.25
145T	6.96	6.10	13.80	3.50	2.75	5.50	1.00	4.00	.10	.79 x .34	7.18	0.771	.188	.875	.87	5.55	4.29	2.25	1.41	2.25
182T	8.82	6.50	17.05	4.50	3.75	7.50	1.00	4.50	.15	.71 x .47	8.82	0.986	.250	1.125	1.10	6.50	5.17	2.75	1.78	2.75
184T	8.82	6.50	17.05	4.50	3.75	7.50	1.00	4.50	.15	.71 x .47	8.82	0.986	.250	1.125	1.10	6.50	5.17	2.75	1.78	2.75
213T	10.32	7.32	18.97	5.25	4.25	8.50	-	5.50	.20	.71 x .47	11.18	1.201	.312	1.375	1.10	7.68	6.38	3.50	2.41	3.38
215T	10.32	7.32	20.05	5.25	4.25	8.50	1.50	5.50	.20	.71 x .47	11.18	1.201	.312	1.375	1.10	7.68	6.38	3.50	2.41	3.38
254T	12.2	10.1	25.29	6.25	5.00	10.0	-	8.25	.83	Ø0.53	13.6	1.416	.375	1.625	1.25" NPT	11.0	9.0	4.25	2.91	4.00
***256T	12.2	12.8	27.02	6.25	5.00	10.0	-	10.0	.83	Ø0.53	13.6	1.416	.375	1.625	1.25" NPT	11.0	9.0	4.25	2.91	4.00

*Alternate mounting on same base.

BRAKE INFO									
FRAME	FT. LB.	STANDARD ENCLOSURE	XC*	XL	XP	WT/DT ENCLOSURE	XC*	XL	XP
B140T	3	56,000 SERIES	2.94	4.06	6.54	56,000 SERIES	2.94	4.06	6.54
B140T	6	56,000 SERIES	2.94	4.06	6.54	56,000 SERIES	2.94	4.06	6.54
B140T	10	56,000 SERIES	2.94	4.06	6.54	56,000 SERIES	2.94	4.06	6.54
B140/180T	15	56,000 SERIES	2.94	4.06	6.54	56,000 SERIES	2.94	4.06	6.54
B180T	25	56,000 SERIES	2.94	4.50	6.54	56,000 SERIES	2.94	4.51	6.54
B210T	25	87,000 SERIES	4.63	7.57	9.00	87,000 SERIES	4.69	7.75	9.00
B210T	35	87,000 SERIES	4.63	7.57	9.00	87,000 SERIES	4.69	7.75	9.00
B210T	50	87,000 SERIES	4.63	8.07	9.00	87,000 SERIES	4.69	8.25	9.00
B250T	75	87,000 SERIES	4.63	8.07	9.00	87,000 SERIES	4.69	8.25	9.00
B250T	100	87,000 SERIES	4.63	8.56	9.00	87,000 SERIES	4.69	8.56	9.00

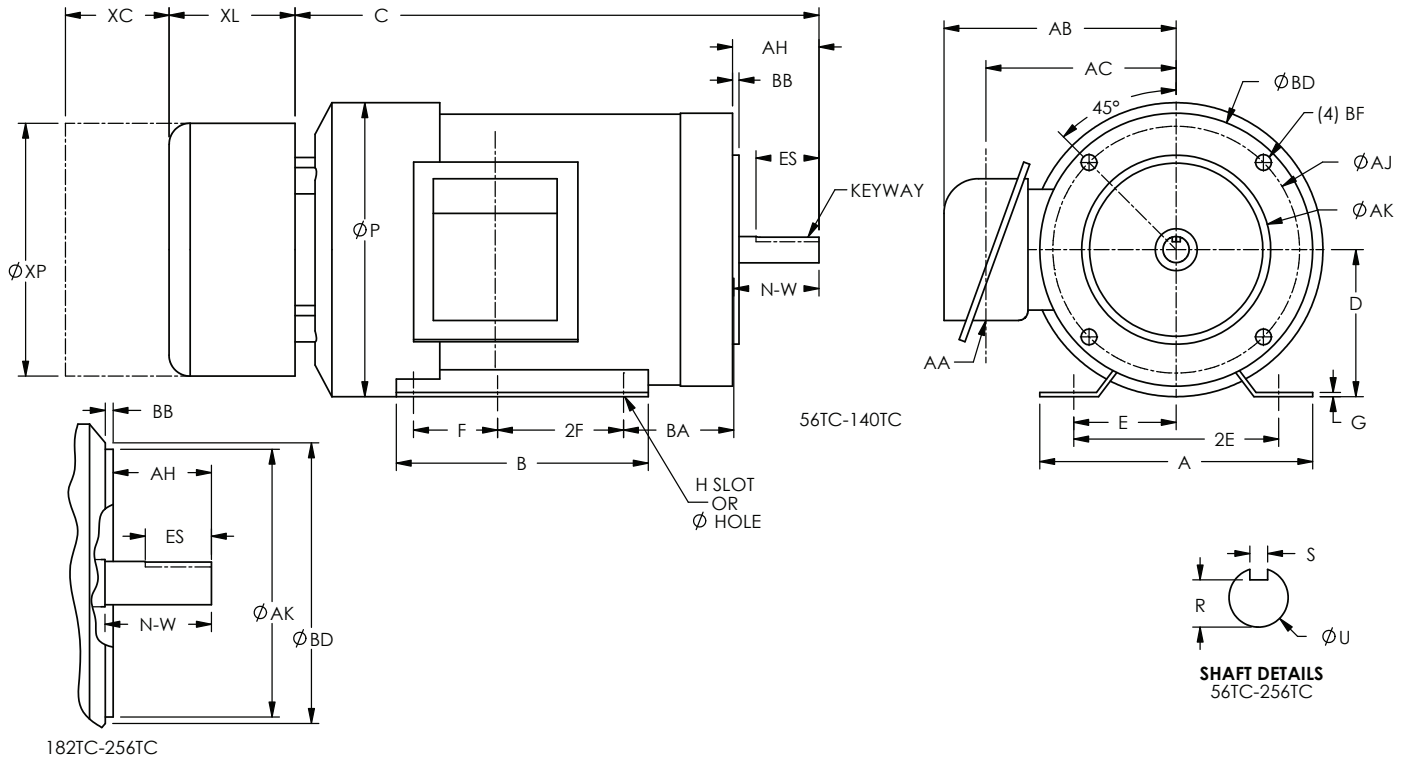
*Clearance required to remove brake cover.
All brake dimensions given are with Stearns Brakes.

Dimensions subject to change without notice. Refer to factory for Certified drawing.

** All motors shown at longest frame length

*** 250 and above motors will be cast iron ribbed

C-FACE TEFC BRAKE MOTORS 140TC-256TC



FRAME	A	B	C	D	E	F	2F	G	H	P	R	S	U	AA	AB	AC	AH	AJ	AK	BA	BB	BD	BF	ES	N-W
143TC	6.96	6.10	12.82	3.50	2.75	1.00	4.00	.10	.79x.34	7.18	0.771	.188	.875	.87	5.55	4.29	2.12	5.88	4.50	2.75	.16	6.50	3/8-16	1.41	2.25
145TC	6.96	6.10	14.40	3.50	2.75	1.00	4.00	.10	.79x.34	7.18	0.771	.188	.875	.87	5.55	4.29	2.12	5.88	4.50	2.75	.16	6.50	3/8-16	1.41	2.25
182TC	8.82	6.50	17.00	4.50	3.75	1.00	4.50	.15	.71x.47	8.82	0.986	.250	1.125	1.10	6.50	5.17	2.62	7.25	8.50	3.50	.25	8.86	1/2-13	1.78	2.75
184TC	8.82	6.50	17.34	4.50	3.75	1.00	4.50	.15	.71x.47	8.82	0.986	.250	1.125	1.10	6.50	5.17	2.62	7.25	8.50	3.50	.25	8.86	1/2-13	1.78	2.75
213TC	10.32	7.32	18.96	5.25	4.25	-	5.50	.20	.71x.47	11.18	1.201	.312	1.375	1.10	7.68	6.38	3.12	7.25	8.50	4.25	.25	9.00	1/2-13	2.41	3.38
215TC	10.32	9.30	20.14	5.25	4.25	1.50	5.50	.20	.71x.47	11.18	1.201	.312	1.375	1.10	7.68	6.38	3.12	7.25	8.50	4.25	.25	9.00	1/2-13	2.41	3.38
254TC	12.2	10.1	25.29	6.25	5.00	-	8.25	.83	Ø0.53	13.6	1.416	.375	1.625	1.25" NPT	11.0	9.0	3.75	7.25	8.50	4.25	.25	9.00	1/2-13	2.91	4.00
256TC***	12.2	12.8	27.02	6.25	5.00	-	10.0	.83	Ø0.53	13.6	1.416	.375	1.625	1.25" NPT	11.0	9.0	3.75	7.25	8.50	4.25	.25	9.00	1/2-13	2.91	4.00

BRAKE INFO									
FRAME	FT. LB.	STANDARD ENCLOSURE	XC*	XL	XP	WT/DT ENCLOSURE	XC*	XL	XP
B140TC	3	56,000 SERIES	2.94	4.06	6.54	56,000 SERIES	2.94	4.06	6.54
B140TC	6	56,000 SERIES	2.94	4.06	6.54	56,000 SERIES	2.94	4.06	6.54
B140TC	10	56,000 SERIES	2.94	4.06	6.54	56,000 SERIES	2.94	4.06	6.54
B140/180TC	15	56,000 SERIES	2.94	4.06	6.54	56,000 SERIES	2.94	4.06	6.54
B180TC	25	56,000 SERIES	2.94	4.50	6.54	56,000 SERIES	2.94	4.51	6.54
B210TC	25	87,000 SERIES	4.63	7.57	9.00	87,000 SERIES	4.69	7.75	9.00
B210TC	35	87,000 SERIES	4.63	7.57	9.00	87,000 SERIES	4.69	7.75	9.00
B210TC	50	87,000 SERIES	4.63	8.07	9.00	87,000 SERIES	4.69	8.25	9.00
B250TC	75	87,000 SERIES	4.63	8.07	9.00	87,000 SERIES	4.69	8.25	9.00
B250TC	105	87,000 SERIES	4.63	8.56	9.00	87,000 SERIES	4.69	8.56	9.00

*Clearance required to remove brake cover.
All brake dimensions given are with Stearns Brakes.

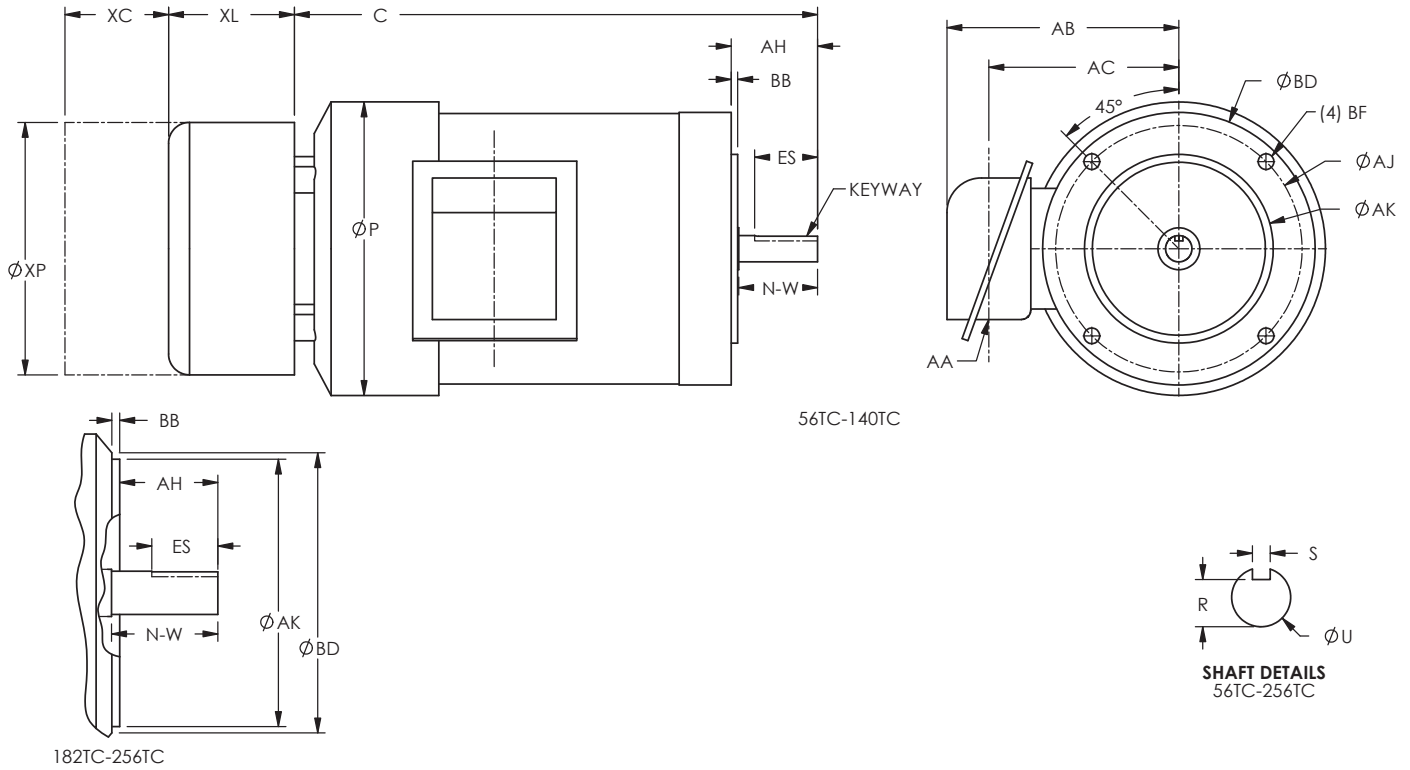
Dimensions subject to change without notice. Refer to factory for Certified drawing.

** All motors shown at longest frame length

*** 250 and above motors will be cast iron ribbed

C-FACE TEFC BRAKE MOTORS (140TC-256TC)

STERLING
ELECTRIC, INC.



FRAME	C	P	R	S	U	AA	AB	AC	AH	AJ	AK	BB	BD	BF	ES	N-W
143TC	12.82	7.18	0.771	.188	.875	.87	5.55	4.29	2.12	5.88	4.50	.16	6.50	3/8-16	1.41	2.25
145TC	14.40	7.18	0.771	.188	.875	.87	5.55	4.29	2.12	5.88	4.50	.16	6.50	3/8-16	1.41	2.25
182TC	17.00	8.82	0.986	.250	1.125	1.10	6.50	5.17	2.62	7.25	8.50	.25	8.86	1/2-13	1.78	2.75
184TC	17.34	8.82	0.986	.250	1.125	1.10	6.50	5.17	2.62	7.25	8.50	.25	8.86	1/2-13	1.78	2.75
213TC	18.96	11.18	1.201	.312	1.375	1.10	7.68	6.38	3.12	7.25	8.50	.25	9.00	1/2-13	2.41	3.38
215TC	10.14	11.18	1.201	.312	1.375	1.10	7.68	6.38	3.12	7.25	8.50	.25	9.00	1/2-13	2.41	3.38
254TC	25.29	13.6	1.416	.375	1.625	1.25" NPT	11.0	9.0	3.75	7.25	8.50	.25	9.00	1/2-13	2.91	4.00
***256TC	27.02	13.6	1.416	.375	1.625	1.25" NPT	11.0	9.0	3.75	7.25	8.50	.25	9.00	1/2-13	2.91	4.00

BRAKE INFO										
FRAME	FT. LB.	STANDARD ENCLOSURE	XC*	XL	XP	WT/DT ENCLOSURE	XC*	XL	XP	
B140TC	3	56,000 SERIES	2.94	4.06	6.54	56,000 SERIES	2.94	4.06	6.54	
B140TC	6	56,000 SERIES	2.94	4.06	6.54	56,000 SERIES	2.94	4.06	6.54	
B140TC	10	56,000 SERIES	2.94	4.06	6.54	56,000 SERIES	2.94	4.06	6.54	
B140/180TC	15	56,000 SERIES	2.94	4.06	6.54	56,000 SERIES	2.94	4.06	6.54	
B180TC	25	56,000 SERIES	2.94	4.50	6.54	56,000 SERIES	2.94	4.51	6.54	
B210TC	25	87,000 SERIES	4.63	7.57	9.00	87,000 SERIES	4.69	7.75	9.00	
B210TC	35	87,000 SERIES	4.63	7.57	9.00	87,000 SERIES	4.69	7.75	9.00	
B210TC	50	87,000 SERIES	4.63	8.07	9.00	87,000 SERIES	4.69	8.25	9.00	
B250TC	75	87,000 SERIES	4.63	8.07	9.00	87,000 SERIES	4.69	8.25	9.00	
B250TC	105	87,000 SERIES	4.63	8.56	9.00	87,000 SERIES	4.69	8.56	9.00	

*Clearance required to remove brake cover.
All brake dimensions given are with Stearns Brakes.

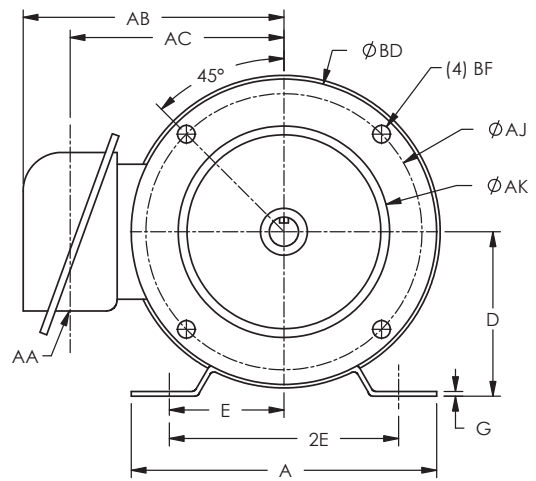
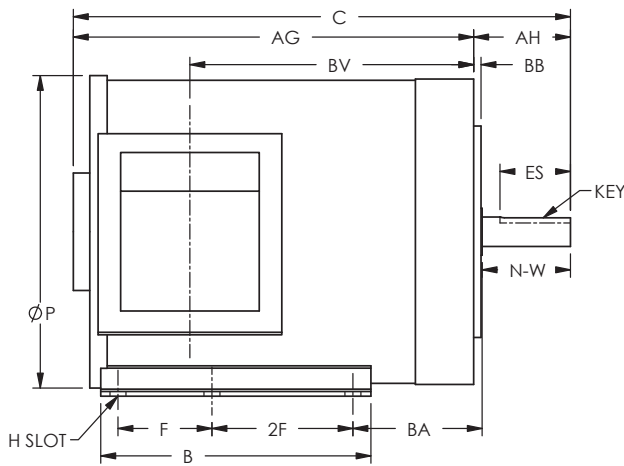
Dimensions subject to change without notice. Refer to factory for Certified drawing.

** All motors shown at longest frame length

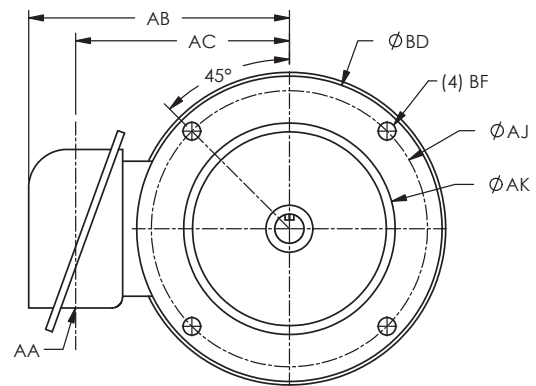
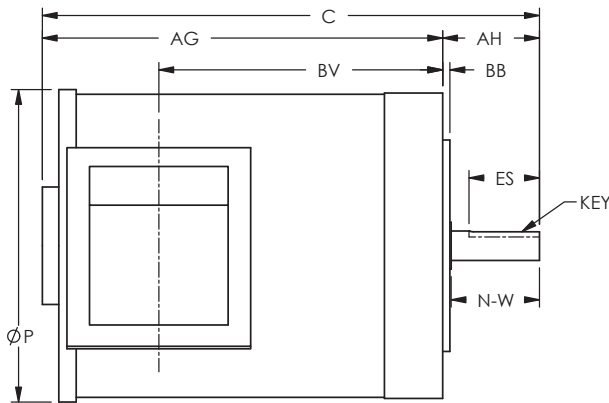
*** 250 and above motors will be cast iron ribbed

C-FACE TENV STAINLESS STEEL MOTORS

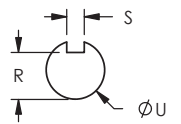
FOOTED



FOOTLESS



SHAFT DETAILS



HP	POLES	FRAME	A	B	C	D	E	2E	F*	2F	G	H	N-W	P	R	S	U
0.33	2 4	56C	6.50	3.75	9.52	3.50	2.44	4.88	-	3.00	.10	.79 x .34	1.88	6.50	.517	.188	.625
0.50	2 4	56C	6.50	3.75 5.75	9.52 10.20	3.50	2.44	4.88	2.00	3.00	.10	.79 x .34	1.88	6.50	.517	.188	.625
0.75	2 4	56C	6.50	5.75	10.20 11.18	3.50	2.44	4.88	2.00	3.00	.10	.79 x .34	1.88	6.50	.517	.188	.625
1.00	2 4	56C	6.50	5.75	11.18	3.50	2.44	4.88	2.00	3.00	.10	.19 x .34	1.88	6.50	.517	.188	.625

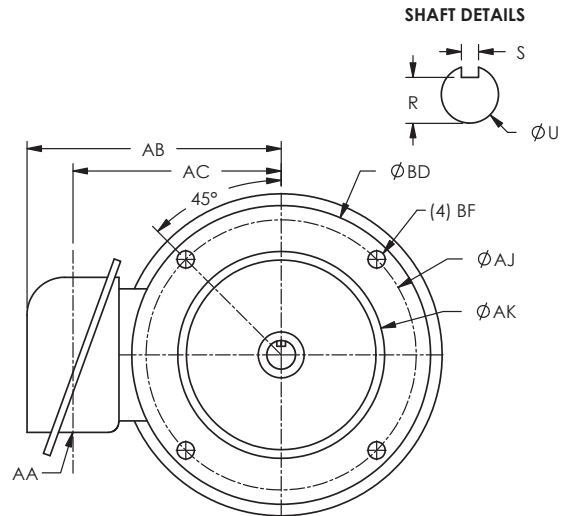
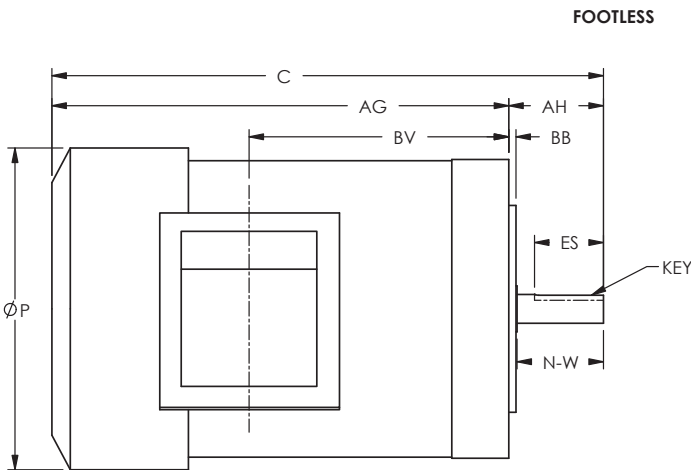
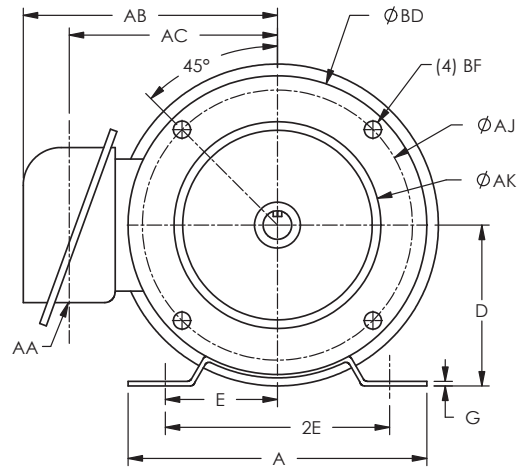
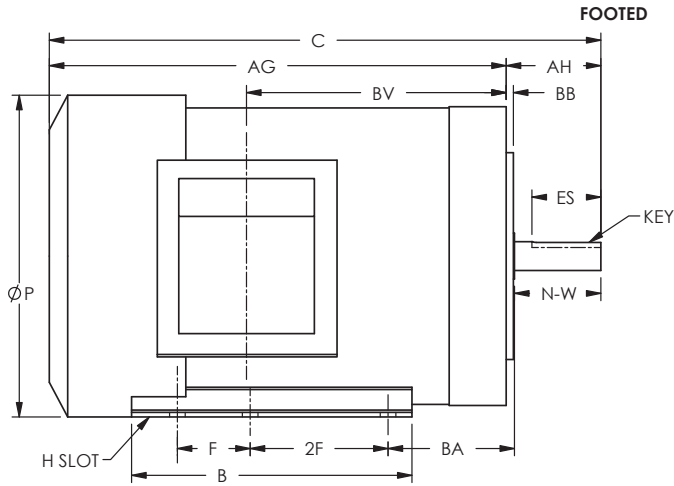
*Alternate mounting on same base.

HP	RPM	FRAME	AA	AB	AC	AG	AH	AJ	AK	BA	BB	BD	BF	BV	ES
0.33	2 4	56C	.87	5.53	4.25	7.46	2.06	5.88	4.50	2.75	.16	6.50	3/8-16	4.55	1.41
0.50	2 4	56C	.87	5.55	4.25	7.46 8.14	2.06	5.88	4.50	2.75	.16	6.50	3/8-16	4.55 5.65	1.41
0.75	2 4	56C	.87	5.55	4.25	8.14 9.12	2.06	5.88	4.50	2.75	.16	6.50	3/8-16	5.65 6.04	1.41
1.00	2 4	56C	.87	5.55	4.25	9.12	2.06	5.88	4.50	2.75	.16	6.50	3/8-16	6.04	1.41

Dimensions subject to change without notice. Refer to factory for Certified drawing.

C-FACE TEFC STAINLESS STEEL MOTORS (56C-140TC)

**STERLING
ELECTRIC, INC.**



HP	POLES	FRAME	A	B	C	D	E	2E	F*	2F	G	H	N-W	P	R	S	U
1.0	2/4	56C	6.50	6.10	12.00	3.50	2.44	4.88	2.00	3.00	.10	.79 x .34	1.88	7.00	.517	.188	.625
	2/4	143TC	6.96	6.10	12.34	3.50	2.75	5.50	1.00	4.00	.10	.79 x .34	2.25	7.02	.771	.188	.875
1.5	2/4	56C	6.50	6.10	12.00	3.50	2.44	4.88	2.00	3.00	.10	.79 x .34	1.88	7.00	.517	.188	.625
	2/4	145TC	6.96	6.10	12.73	3.50	2.75	5.50	1.00	4.00	.10	.79 x .34	2.25	7.02	.771	.188	.875
2.0	2/4	56C	6.50	6.10	12.40	3.50	2.44	4.88	2.00	3.00	.10	.79 x .34	1.88	7.00	.517	.188	.625
	2/4	145TC	6.96	6.10	13.32 12.73	3.50	2.75	5.50	1.00	4.00	.10	.79 x .34	2.25	7.02	.771	.188	.875

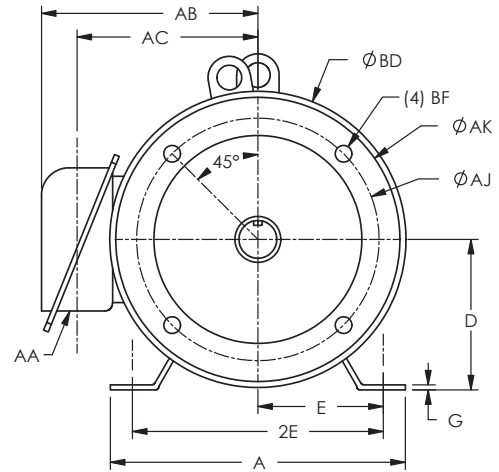
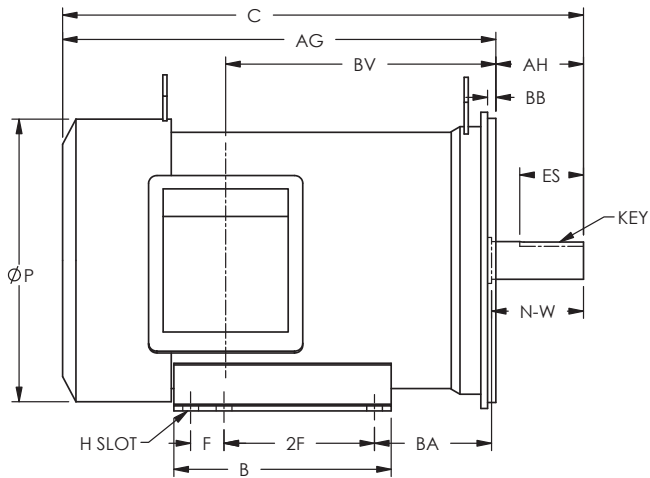
*Alternate mounting on same base.

** All motors shown at longest frame length.

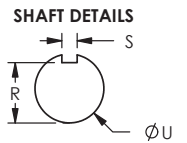
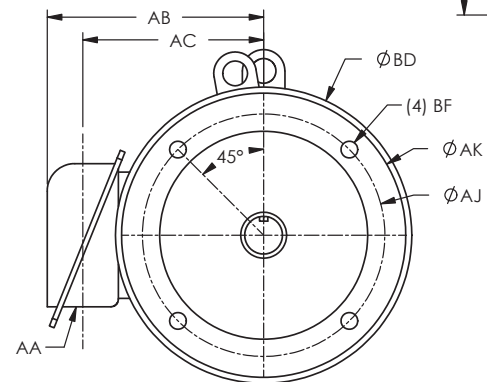
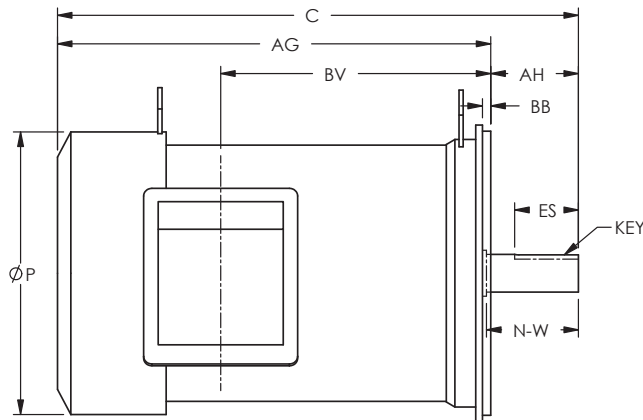
HP	POLES	FRAME	AA	AB	AC	AG	AH	AJ	AK	BA	BB	BD	BF	BV	ES
1.0	2/4	56C	.87	5.53	4.25	9.94	2.06	5.88	4.50	2.75	.16	6.50	3/8-16	7.71	1.41
	2/4	143TC	.87	5.55	4.25	10.22	2.12	5.88	4.50	2.75	.16	6.50	3/8-16	5.93	1.41
1.5	2/4	56C	.87	5.55	4.25	9.94	2.06	5.88	4.50	2.75	.16	6.50	3/8-16	7.71	1.41
	2/4	145TC	.87	5.55	4.25	10.61	2.12	5.88	4.50	2.75	.16	6.50	3/8-16	6.32	1.41
2.0	2/4	56C	.87	5.55	4.25	10.34	2.06	5.88	4.50	2.75	.16	6.50	3/8-16	6.04	1.41
	2/4	145TC	.87	5.55	4.25	11.20 10.61	2.12	5.88	4.50	2.75	.16	6.50	3/8-16	6.91 6.32	1.41

Dimensions subject to change without notice. Refer to factory for Certified drawing.

FOOTED



FOOTLESS



FRAME	A	B	C	D	E	2E	F*	2F	G	H	N-W	P	R	S	U
182TC	8.82	6.50	16.37	4.50	3.75	7.50	1.00	4.50	.15	.71 x .47	2.75	8.45	0.986	.250	1.125
184TC	8.82	6.50	17.36	4.50	3.75	7.50	1.00	4.50	.15	.71 x .47	2.75	8.45	0.986	.250	1.125
213TC	10.32	7.32	17.92	5.25	4.25	8.50	-	5.50	.20	.71 x .47	3.38	10.77	1.201	.31	1.375
215TC	10.32	9.30	19.21	5.25	4.25	8.50	1.50	5.50	.20	.71 x .47	3.38	10.77	1.201	.31	1.375
254TC	11.18	9.53	24.00	6.25	5.00	10.00	-	8.25	.47	Ø.53	4.01	12.36	1.416	.38	1.625
254TC	11.18	11.28	25.40	6.25	5.00	10.00	-	10.00	.47	Ø.53	4.01	12.36	1.416	.38	1.625
284TC	12.20	11.08	27.00	7.00	5.50	11.00	-	9.50	.78	Ø.53	4.62	14.00	1.519	.50	1.875
284TSC	12.20	11.08	25.60	7.00	5.50	11.00	-	9.50	.78	Ø.53	3.25	14.00	1.416	.38	1.625
286TC	12.20	12.57	28.00	7.00	5.50	11.00	-	11.00	.78	Ø.53	4.62	14.00	1.519	.50	1.875
286TSC	12.20	12.57	26.60	7.00	5.50	11.00	-	11.00	.78	Ø.53	3.25	14.00	1.416	.38	1.625

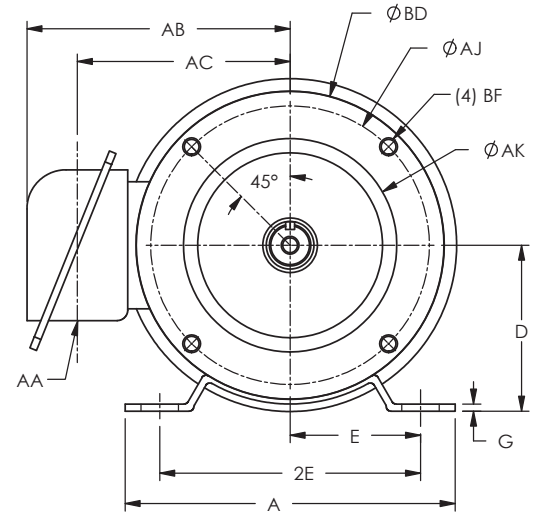
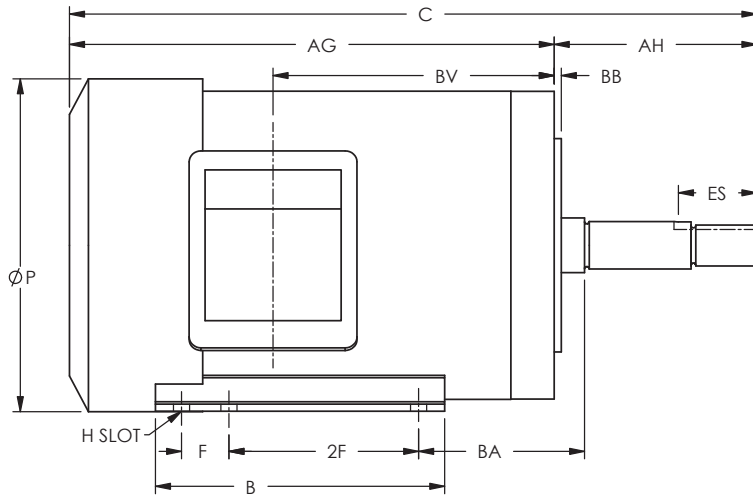
*Alternate mounting on same base.
** All motors shown at longest frame length.

FRAME	AA	AB	AC	AG	AH	AJ	AK	BA	BB	BD	BF	BV	ES
182TC	1.10	6.50	5.17	13.75	2.62	7.25	8.50	3.50	.25	8.86	1/2-13	8.28	1.78
184TC	1.10	6.50	5.17	14.74	2.62	7.25	8.50	3.50	.25	8.86	1/2-13	8.87	1.78
213TC	1.10	7.68	6.38	14.80	3.12	7.25	8.50	4.25	.25	9.00	1/2-13	9.33	2.41
215TC	1.10	7.68	6.38	16.09	3.12	7.25	8.50	4.25	.25	9.00	1/2-13	10.50	2.41
254TC	1.43	9.84	8.00	20.07	3.75	7.25	8.50	4.75	.25	11.85	1/2-13	12.01	2.91
254TC	1.43	9.84	8.00	21.38	3.75	7.25	8.50	4.75	.25	11.85	1/2-13	13.58	2.91
284TC	2.04	11.42	9.2	22.38	4.62	9.00	10.50	4.75	.25	13.27	1/2-13	13.8	3.28
284TSC	2.04	11.42	9.2	22.38	3.25	9.00	10.50	4.75	.25	13.27	1/2-13	13.8	1.91
286TC	2.04	11.42	9.2	23.38	4.62	9.00	10.50	4.75	.25	13.27	1/2-13	14.0	3.28
286TSC	2.04	11.42	9.2	23.38	3.25	9.00	10.50	4.75	.25	13.27	1/2-13	14.0	1.91

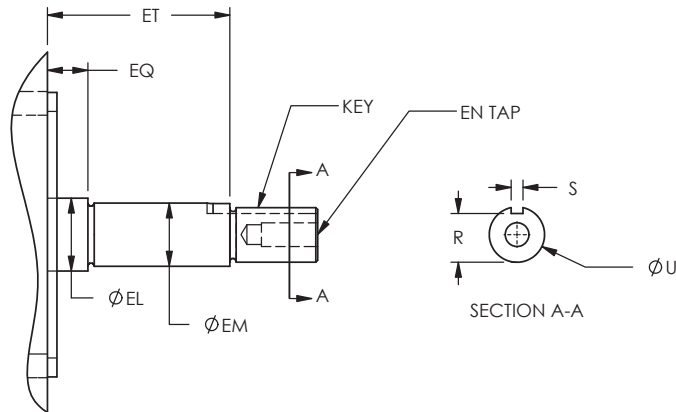
Dimensions subject to change without notice. Refer to factory for Certified drawing.

PREMIUM STAINLESS STEEL CLOSE COUPLED PUMP MOTORS

**STERLING
ELECTRIC, INC.**



SHAFT DETAILS



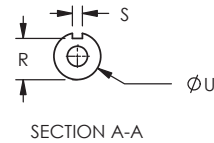
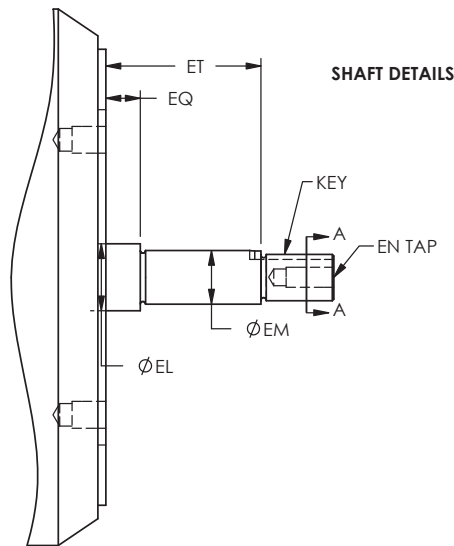
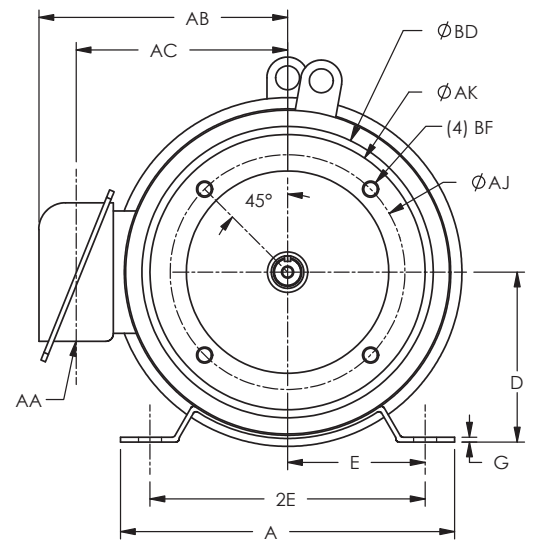
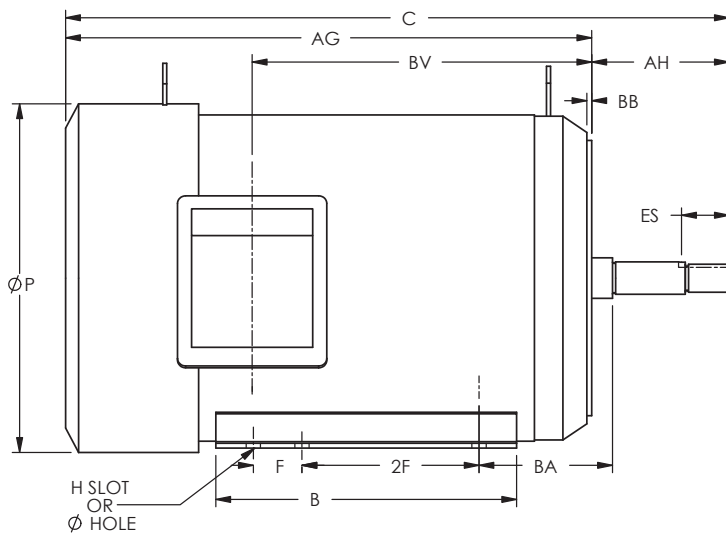
FRAME	A	B	C	D	E	2E	F*	2F	G	H	P	R	S	U	AA	AB
143JM	6.97	6.10	14.48	3.50	2.75	5.50	1.00	4.00	.10	.79 x .34	6.79	.771	.188	.8745	0.87	5.58
145JM	6.97	6.10	16.83	3.50	2.75	5.50	1.00	4.00	.10	.79 x .34	6.79	.771	.188	.8745	0.87	5.58
182JM	8.82	6.50	18.00	4.50	3.75	7.50	1.00	4.50	.10	.71 x .47	8.45	.771	.188	.8745	1.10	6.48
184JM	8.82	6.50	18.99	4.50	3.75	7.50	1.00	4.50	.10	.71 x .47	8.45	.771	.188	.8745	1.10	6.48

*Alternate mounting on same base.
** All motors shown at longest frame length.

FRAME	AC	AG	AH	AJ	AK	BA	BB	BD	BF	BV	EL	EM	EN	EQ	ES	ET
143JM	4.25	10.23	4.25	5.88	4.50	3.06	.16	6.50	3/8-16	5.93	1.156	1.00	3/8-16	.625	1.65	2.88
145JM	4.25	11.8	4.25	5.88	4.50	3.06	.16	6.50	3/8-16	8.29	1.156	1.00	3/8-16	.625	1.65	2.88
182JM	5.18	13.75	4.25	5.88	4.50	3.66	.16	6.50	3/8-16	8.62	1.250	1.00	3/8-16	.625	1.65	2.88
184JM	5.18	14.74	4.25	5.88	4.50	3.66	.16	6.50	3/8-16	9.6	1.250	1.00	3/8-16	.625	1.65	2.88

Dimensions subject to change without notice. Refer to factory for Certified drawing.

PREMIUM STAINLESS STEEL CLOSE COUPLED PUMP MOTORS (213JM-286JM)



FRAME	A	B	C	D	E	2E	F*	2F	G	H	P	R	S	U	AA	AB
213JM	10.32	7.32	19.2	5.25	4.25	8.50	-	5.47	.16	.71 x .44	10.77	.771	.188	.8745	1.10	7.68
215JM	10.32	9.29	20.4	5.25	4.25	8.50	1.50	5.47	.16	.71 x .44	10.77	.771	.188	.8745	1.10	7.68
254JM	11.20	9.43	25.25	6.25	5.00	10.00	-	8.25	.60	Ø0.53	12.50	1.112	.250	1.2495	1.40	9.24
256JM	11.20	11.18	26.9	6.25	5.00	10.00	-	10.00	.60	Ø0.53	12.50	1.112	.250	1.2495	1.40	9.24
284JM	12.20	11.00	27.6	7.00	5.50	11.00	-	9.50	.78	Ø0.53	14.0	1.112	.250	1.2495	2.04	11.4
286JM	12.20	12.57	29.5	7.00	5.50	11.00	-	11.00	.78	Ø0.53	14.0	1.112	.250	1.2495	2.04	11.4

*Alternate mounting on same base.
 **All motors shown at longest frame length.

FRAME	AC	AG	AH	AJ	AK	BA	BB	BD	BF	BV	EL	EM	EN	EQ	ES	ET
213JM	6.38	14.8	4.25	7.25	8.50	5.14	.25	9.00	1/2-13	9.32	1.250	1.00	3/8-16	.625	1.65	2.88
215JM	6.38	16.9	4.25	7.25	8.50	5.14	.25	9.00	1/2-13	10.51	1.250	1.00	3/8-16	.625	1.65	2.88
254JM	7.7	20.0	5.25	7.25	8.50	5.01	.25	11.73	1/2-13	12.5	1.750	1.375	1/2-13	.625	2.53	3.00
256JM	7.7	21.6	5.25	7.25	8.50	5.64	.25	11.73	1/2-13	13.77	1.750	1.375	1/2-13	.625	2.53	3.00
284JM	9.3	22.35	5.25	11.00	12.5	5.64	.25	13.27	5/8-11	13.8	1.750	1.375	1/2-13	.625	2.53	3.00
286JM	9.3	24.25	5.25	11.00	12.5	5.64	.25	13.27	5/8-11	14.0	1.750	1.375	1/2-13	.625	2.53	3.00

Dimensions subject to change without notice. Refer to factory for Certified drawing.

NOMENCLATURES & MODEL NUMBER CODES

MODEL NUMBER CODE

SUFFIX

BASIC

EXAMPLE:

E B 015 4 F F A 01 or 050* S

Series	Type	HP @ Max. RPM†	Poles	Enclosure/ Type	Features	HZ/ Volts	Special Modifications	Brake Ft-Lbs	Brake Vendor
A- Frame 48 Stainless Steel Body	60 Min. C&H Duty	Y02-1/4	2 - 2	B- TEBC Blower Cooled	A- C- Face Footed 2-P Long Shaft	A- 60/208-230/460	01- Numbers assigned per customer specifications	Y15=1.5	S=Steams
B- NEMA Design B	NEMA Design B	Y03-1/3	4 - 4	C- TEFC Steril-Core	B- C- Face Footed	B- 60/460		001=1	D=Dings
C- NEMA Design D	NEMA Design D	Y05 - 1/2	6 - 6	D- Drip Proof	C- C- Face Footless	C- 60/230		010=10	L=Lenze
D- D-Series	5-8% Slip	Y07 - 3/4	8 - 8	F- TEFC	D- D- Flange Footless	D- 60/240/480		100=100	R=Reuland
E- E-Series	30 Min. C&H Duty	Y08 - 7/8	E - 10	G- TEFC Farm Duty	E- D- Flange Footed	E- 60/200			W=Warner
F- F-Series	30 Min. C&H 2 Sp., 1 Wd.	Y15 - 1-1/2	F - 12	H- TEFC Threaded Shaft/ No Therm. Protection	F- Foot Mount	F- 60/208			
G- G-Series	30 Min. C&H 2 Sp., 2 Wd.	Y75 - 7-1/2	G - 16	I- TEFC Threaded Shaft with Auto Reset	G- C- Face Footless with Locked Bearing	G- 60/575			
H- H-Series	48 Rolled Steel Body	010 - 10	K - 4/6	J- TEFC Auto Reset	H- C- Face Footed with Locked Bearing	I- 60/230/460			
J- J-Series	Wound Rotor	100 - 100	L - 4/8	K- TEFC Man. Reset	J- C.C. Pump (JM)	J- 60/190/380			
K- K-Series	Wound Rotor. 30 Min. Cont. Duty	M - 4/12	M - 4/12	L- TEFC Mill & Chem Duty	K- C.C. Pump (JP)	K- 50/190			
L- L-Series	Wound Rotor. 60 Min. C&H Duty	P - 6/8	P - 6/8	M- TENV Steril-Seal Washdown	L- 48 Frame Motor with 56C Mounting Dimensions - Footless	L- 50/208/416			
M- M-Series	C&H Duty	R - 6/12	R - 6/12	N- TENV	M- 48 Frame Motor with 56C Mounting Dimensions - Footless	M- 50/220			
N- N-Series	C&H Duty	S - 8/16	S - 8/16	P- TEFC Steril-Seal Washdown	N- 48 Frame Motor with 56C Mounting Dimensions - Footless	O- 50/380			
O- O-Series	2 Sp., 1 Wd., CT	T - 4/6 8 /12	T - 4/6 8 /12	R- TENV Premium Stainless Steel / IP66	P- Base Footless	P- 50/400			
P- P-Series	2 Sp., 2 Wd., CT			S- TEFC Premium Stainless Steel / IP66	S- Brake Motor Footed	R- 50/200/400			
Q- Q-Series	Oil Well Pump Motors			T- TENV Auto Reset Conduit Box	T- Brake Motor Footless/ C- Face	S- 50/220/440			
R- R-Series	Vector Duty Motors With Encoders*			Y- Explosion Proof	V- NEMA "TS" Short Shaft 1800-RPM And Slower	T- 60/380			
S- S-Series	2 Sp., 1 Wd., CHP				X- Special Features Not Covered Elsewhere	U- 50/60/190/380/230/460			
T- T-Series	2 Sp., 2 Wd., CHP				Y- Brake Motor Footed / C- Face	V- 60/230/460/796			
U- U-Series	Non-Standard Frame Size Inverter Duty Only				Z- Same As "V" Above, Except Without C-Face	W- 60/115/208-230			
V- V-Series	E or J-Series U-Frame					X- 60/208-230			
W- W-Series	4 Sp., 2 Wd., CT					Z- Special			
X- X-Series	2 Sp., 2 Wd., CT								
Y- Y-Series	E-PACT Energy Efficient								
Z- Z-Series	4 Sp., 2 Wd., CHP or VT§								
	2 Sp., 1 Wd., VT								
	2 Sp., 2 Wd., VT								
	U-Frame Motors								
	Water-Thin								
	X-Series								
	Frame 140T and larger Stainless Steel								

* In case of vector motors, the PPR rating of the encoder follows the model number instead of the foot-pound rating of the brake.

§ Check number of poles and horsepower rating to determine whether unit is Constant Horsepower or Variable Torque.

† HP at nominal 60-Hz for variable frequency inverter/vector duty motors.

CONDITIONS OF SALE

Acceptance of your order is subject to the following terms and conditions as well as the condition of sale stated in the Price Book, which may not be superseded or modified in any manner by the terms of your purchase order unless specifically agreed to in writing by Sterling Electric, Inc. ("the Company");

1. **WARRANTY** - The Company warrants that all of its own manufactured products will be of the kind and quality described in the specifications established at time of purchase, and no other warranty, except of title, is herein expressed and none shall be implied. The conditions of any test of the products shall be mutually agreed upon, and the Company shall be notified of and may be represented at all tests that may be made. If any failure to comply with the specifications appears within one year from the date of shipment the Purchaser shall notify the Company thereof immediately. Failure to notify the Company within such period shall relieve said Company from any and all obligations. The liability of the Company (except as to title) arising out of the supplying of said products or their use, whether on warranties or otherwise, shall not in any case exceed the least of the cost or correcting defects in the products, by repair or by supplying a replacement, f.o.b. factory, of the defective part or parts. Upon expiration of (1) year from the date of shipment all such liability shall terminate.

THE FOREGOING WARRANTY IS IN LIEU OF ALL OTHER WARRANTIES, EXPRESSED OR IMPLIED, WITH RESPECT TO THE PRODUCT. INCLUDING ANY IMPLIED OR STATUTORY WARRANTY OF MERCHANTABILITY OR FITNESS FOR PURPOSE. NEITHER COMPANY NOR ITS SUPPLIERS SHALL BE LIABLE, WHETHER IN CONTRACT OR IN TORT OR UNDER ANY OTHER LEGAL THEORY, FOR LOSS OF USE, REVENUE OR PROFIT, OR FOR COST OF CAPITOL OR OF SUBSTITUTED USE OR PERFORMANCE, OR FOR INCIDENTAL, INDIRECT, SPECIAL OR CONSEQUENTIAL DAMAGES, OR FOR ANY OTHER LOSS OR COST OF SIMILAR TYPE, OR FOR CLAIMS BY PURCHASER FOR DAMAGES OR PURCHASER'S CUSTOMERS.

The Company is not responsible for damage to products or injury to persons or property due to abuse, improper installation or storage, alteration or modification, use other than for which originally sold, or through operations above rated load, either intentionally or otherwise, of any product or part. Further the Company shall not under any circumstances, be liable for the fault, negligence, or wrongful acts of purchaser of Purchaser's employees, or Purchaser's other contractors or suppliers. If any Purchaser fails to comply with the stipulated conditions of operation, or fails to permit the Company to inspect defects before repairing, or alters the product in any way, or fails to maintain the equipment in as-is shipped condition in storage, the Company's responsibility shall terminate.

2. **CHANGE OF PRICES/ORDERS** - A minimum charge of \$50.00 shall be charged on any order. Any order changes requested by Purchaser after order has been entered shall incur a minimum charge of \$50.00. In addition, charges will be made to cover the cost of re-engineering, drafting, parts scrapped because of the change and Price Book modifications caused by the change. In the event of a price change, prices on the unshipped portions of all orders are subject to the price in effect at the time of shipment. Exceptions to these terms are stated in the Price Book Conditions of Sale.

3. **SHIPPING AND STORAGE** - Products shall be shipped f.o.b. point of shipment, no freight allowed. Shipping methods or carriers are at the discretion of the Company. Date of shipment shall be the date shown on bill of lading for receipt of shipment by initial carrier. The Company is not responsible for any damage incurred during delivery by common carrier. Purchaser shall file claim against the carrier. All storage claims must be filled within (10) days of the receipt of shipment. Special storage preparation is recommended for products that will not be put in service within ninety days of shipment. Charges for this service are specified in catalog 705 and the Conditions of Sale. Failure to request such storage preparation will void the warranty on products stored over ninety days.

4. **TERMS OF PAYMENT** - Unless otherwise arranged, terms of payment are cash in full within thirty days of invoice date. Payment will be in U.S. Dollars. On late payments, in the contract price shall, without prejudice to the Company's right to immediate payment, be increased 1% per month on the unpaid balance, but not to exceed the maximum permitted by law.

If at anytime in the Company's judgment the Purchaser may be or may become unable or unwilling to meet the terms specified, the Company may require satisfactory assurances, full or partial payment, as a condition to commencing or continuing manufacture of making shipment, and may, if shipment has been made, recover the product(s) from the carrier, pending receipt of such assurances.

5. **CANCELLATION** - Cancellation of this order may be made by written notice to Company provided that payment of cost incurred by the Company, to the time such notice is received, is made by Purchaser.

6. **PATENTS** - The Company shall defend any suit or proceeding brought against the Purchaser so far as based on a claim that any product, or any part thereof, furnished under this contract constitutes an infringement of any patent of the United States. If notified promptly in writing and given authority, information and assistance (at the Company's expense) for the defense of same, and the Company shall pay all damages and cost awarded therein against the Purchaser. In case said product, or any part thereof, is in such suit held to constitute infringement and the use of said product or part is enjoined, the Company shall, at its own expense, either procure for the Purchaser the right to continue using said product or part; or replace same with non-infringing product; or modify it so that it becomes non-infringing; or remove said product and refund the purchase price and the transportation and installation costs thereof. The forgoing states the entire liability of the company for patent infringement by said product or any part thereof.

7. **DELIVERY/DELAY** - Shipping dates are estimates and are based upon prompt receipt of all necessary information. The Company shall not be liable for delay due to causes beyond its reasonable control, including but not limited to acts of God, acts of failure to act of government, acts or regulations of the federal or state governments, acts or omissions of the Purchaser, acts of civil or military authorities, priorities, fires, strikes, blizzards, earthquakes, tornadoes, floods, epidemics, quarantine restrictions, war, riots, delays in transportation, car, shortages, and inability, due to reasons beyond its reasonable control, to obtain necessary labor, material, or manufacturing facilities. In the event of any such delay, the date of the delivery shall be extended for a period equal to the time lost by reason of the delay and its consequences. Delay caused by Purchaser's request or amendment or addition to order shall cause the Company to apply those prices and price policy clauses in effect as of the date said order is finally released.

8. **TAXES** - The Company's prices do not include sales, use, excise, license or similar taxes. Consequently, in addition to the price specified herein, the amount of any present or future sales, use, excise, license or other similar tax applicable to the sale of the equipment, parts or accessories hereunder shall be paid by the Purchase, or in lieu thereof the Purchaser shall provide the Company with a tax exemption certificate acceptable to the taxing authorities.

9. **TITLE** - The title and right of possession of the equipment, parts or accessories sold hereunder shall remain with the Company and such equipment shall remain personal property until all payments hereunder (including deferred payments, whether evidenced by notes or otherwise) shall have been made in full in cash and the Purchaser agrees to do all acts necessary to protect and maintain such right and title in the Company.

10. **WAIVER/INDEMNITY** - No waiver or modification of any of these terms and conditions of sale shall be valid unless it is made in writing and signed by both Company and Purchaser. Failure by the Company to enforce any right possessed under the foregoing terms and conditions shall not constitute a waiver thereof or establish a custom. Purchaser shall protect, defend, indemnify and hold harmless the Company for all loss, cost or expense arising out of any breach of these Conditions of Sale or negligent act of the Purchaser.

11. **LAWS/LIMITATIONS** - The Company will comply with all applicable Federal, State and local laws, and hereby represents that any goods to be delivered hereunder will be produced in compliance with the requirements of the Fair Labor Standards Act of 1938, as amended. The laws of the State of California shall govern the validity, interpretation and enforcement of this contract. No action, regardless of form, arising out of the sale of use of the products which are the subject of this contract may be brought by either party more than one year after the cause of action has accrued, except on action for nonpayment of the purchase price brought within one year after the last payment due date.



STERLING
ELECTRIC, INC.

7997 Allison Avenue, Indianapolis, Indiana 46268
Phone (800) 866-7973 | Facsimile (800) 474-0543
www.sterlingelectric.com